

Fall 2016



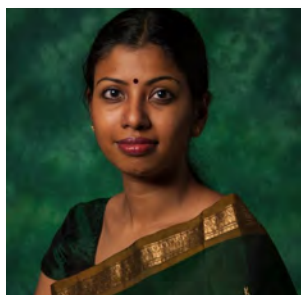
# SERA Newsletter

## Southwest Educational Research Association

### Inside this issue:

<a href="#">THE PREZ SAYS</a>	1-2
<a href="#">PROGRAM CHAIR NEWS</a>	1,4
<a href="#">SERA 40TH ANNIVERSARY RECEPTION</a>	3
<a href="#">CONFERENCE PREVIEW: SAN ANTONIO</a>	5
<a href="#">GRADUATE STUDENT NEWS</a>	6-7,10
<a href="#">WEBINARS</a>	8
<a href="#">AWARDS</a>	9
<a href="#">PRE-CONFERENCE WORKSHOP</a>	10
<a href="#">PRESIDENTIAL INVITED SPEAKER</a>	11
<a href="#">RESEARCH GRANTS</a>	11
<a href="#">ELECTION NEWS</a>	12
<a href="#">MEET THE BOARD</a>	13-14
<a href="#">IMPORTANT DATES</a>	14

### The Prez Says...



Prathiba Natesan

The SERA Board of Directors and I look forward to seeing each of you in San Antonio for another great conference. The annual conference is a fantastic way to establish and renew

collaborative relationships with scholar-practitioners in educational research, share cutting-edge research, and explore new research possibilities.

The 40th Annual meeting of SERA will be held at the Menger Hotel in San Antonio on February 15-17, 2017. Throughout this newsletter you will find details about the conference, including links to the annual meeting, conference information from the **Program Chair LaVonne Williams Fedynich**, as well as

information about the presidential invited address, training sessions, and awards. One highlight we are very excited about is this year's presidential speaker, **Li Cai**, from the University of California, Los Angeles, who will speak to us about **"Playing in others' backyard: A personal story of applying and innovating quantitative methodology."** More information about this session is available in our Program Chair News.

The SERA repository will be

[Continued on Page 2](#)

### Program Chair News



LaVonne Williams Fedynich

The 2017 conference begins on Wednesday afternoon, February 15, in San Antonio, at the historic **Menger Hotel**, with a ticketed training session titled **Identifying and**

**Implementing Evidence Based Practices in Educational Research.** This 2-hour training session will be led by **Forrest Lane** from Sam Houston State University.

**Li Cai**, Professor of Advanced Quantitative Methodology and co-Director of the National Center for Research on Evaluation Standards and Student Testing, is the Presidential Invited Speaker. Professor Li Cai will present the presidential invited address, **"Playing in others' backyard:**

**A personal story of applying and innovating quantitative methodology,"** on Thursday, February 16th, immediately following the annual SERA luncheon. In his address, Professor Cai will share personal stories and experiences of working in a collaborator capacity as a quantitative methodologist in interdisciplinary research teams. Graduate student SERA members will have an opportunity to meet and visit informally with Dr. Cai at the traditional "Fireside Chat" immediately afterward. Additional graduate student

[Continued on Page 4](#)

### EDITORS:

Forrest Lane  
Sam Houston State University

Tonya Jeffery  
Texas A&M University-  
Corpus Christi

## President: Natesan (Continued from pg. 1)

*The Board strives to ensure that SERA membership dues remain low and that the conference is a student-friendly, affordable opportunity for current and aspiring scholars to engage in the exchange of research.”*

up and running again this year. Based on the positive feedback we received, we will continue to offer SERA members the opportunity to upload their papers before the conference begins as well as download the papers for other presentations. Although only first authors will be able to upload and remove papers from the repository, EVERYONE will be able to login to the SERA repository site with the same e-mail address they used when submitting their proposals. They will then be asked to establish a unique password in order to maintain the integrity of the system and ensure that only the authors of papers can upload or delete papers from the repository. More information about the SERA repository will be communicated via e-mail. Be sure to check e-mails from the Executive Director as the conference dates get closer.

The **SERA Early Career Faculty Mentoring Program**, organized by **Jana Willis** and **Sonya Carr** will continue with another session at this year’s conference. The project aims to provide support for junior faculty in the form of mentoring and grants. Look for a junior faculty strand in the 2017 program to find ways you can be mentored as a junior faculty member, apply for grants, or serve as a mentor if you are a more experienced SERA member.

We are pleased to offer the conference program as an app so that members can choose to go paperless. With the **guidebook app** on your Smartphone, you can easily browse through the conference program and mark the presentations/speakers/topics you want to attend as well as their respective venues. Just download the **guidebook app** (<http://guidebook.com/>) and watch for updates in your e-mail after the program schedule is finalized.

### State of the Organization

Membership numbers in SERA continues to remain strong. Like other professional organizations, budget constraints appear to have impacted the increase in membership we had experienced for several years. However, membership is stable and conference attendance has not decreased. The Board strives to ensure that SERA membership dues remain low and that the conference is a student-friendly, affordable opportunity for current and aspiring scholars to engage in the exchange of research. SERA conference has something for everyone. If this is your first SERA conference, I recommend that you attend the Navigating Through and Getting the Most from SERA Session provided by **Linda Reichwein Zientek** and **Susan Troncoso Skidmore**. If you are interested in building your research skills, make sure to attend one of the SERA training workshops. I also encourage you to attend as many paper sessions as you can that are related to your research area.

Be sure to take the time to mingle with colleagues at breakfast and conference breaks. The SERA conference offers the perfect opportunity to develop new research ideas, strengthen your existing ideas, and make connections to effectively turn your ideas into publications. Join us at the Institute of Texan Cultures on the Thursday of the conference to celebrate our 40th year! I look forward to seeing you in San Antonio!

**Prathiba Natesan**  
SERA President  
University of North Texas

## Join Us in Celebrating 40 Years of the Southwest Educational Research Association

We invite all registered participants to join us on the evening of Thursday February 16, 2017 for a 40th anniversary celebration of the Southwest Educational Research Association.

The reception will be held just a short walk from the conference hotel at the Institute of Texan Cultures (address below). Tickets for the reception will be issued with your 2017, conference registration. The reception will include hors d'oeuvres. Please come prepared to join us in celebrating this important milestone.



Photo provided by visitsanantonio.com

### **SERA 40th Anniversary Reception**

6:00pm–8:30pm Thursday, February 16, 2017

at

### **The Institute of Texan Cultures**

801 E César E. Chávez Blvd.

San Antonio, TX 78205

---

*The first meeting related to SERA was held in Spring, 1977, at the Faculty Club on the campus of Southern Methodist University in Dallas. The first SERA meeting followed in 1978 in Austin.*

Please contact Linda Zientek, SERA Executive Director, at [lrz002@shsu.edu](mailto:lrz002@shsu.edu) with any questions about this event.

## Program Chair: Williams-Fedynich (Continued from pg. 1)

*“More than 290 proposals were submitted for the 2017 SERA conference”*



Photo provided by visitsanantonio.com

activities are scheduled Thursday afternoon and evening.

Numerous additional workshops and presentations are planned throughout the conference on topics such as the dissertation process, academic writing, and tips and tools for conducting quantitative, qualitative, and mixed methods research.

More than 290 proposals were submitted for the 2017 SERA conference. Division VI continues to be a popular avenue for dissemination of graduate student members' "work in progress." This division provides graduate students the opportunity to present research in progress, including dissertations or theses that have not yet been defended. All sessions in Division VI are led by discussants that have distinguished careers as researchers. Papers presented in Division VI will

need to be submitted to the discussant **on or before January 8th.**

The draft program should be complete by early December and will be posted to the SERA website. Authors can check their presentation dates and times from the posted program and make travel plans accordingly.

During the conference, projectors for laptops will be provided in all presentation rooms. Presenters will need to bring their own laptop and their presentation on a flash drive. One computer per session should be used to minimize transition between presentations. Presenters will have 10-13 minutes for each presentation, with a few minutes left for questions or discussion. We recommend limiting your presentation to about 10 slides. Please note that Power Point presentations are *not required*.

Presentations are strictly limited to a maximum of 13 minutes in order for all presenters to have sufficient time to present their research. All presenters should bring 10-15 copies of *completed* papers ("in progress" papers for Division VI) for distribution during their presentation. Alternatively, presenters can submit their paper electronically to the SERA repository. The SERA website will contain the most up to date information on conference activities so please visit <http://sera-edresearch.org/> for the latest news.

We look forward to seeing you in San Antonio for the 40th annual SERA conference!

**LaVonne Williams Fedynich**  
2017 Program Chair/  
President Elect  
Texas A&M University-  
Kingsville

## Conference Preview: San Antonio 2017

SERA would like to cordially invite everyone to our annual conference at the Menger Hotel in San Antonio, Texas from February 15-17, 2017. It will be a very intellectually stimulating conference as well as a “good time for all.” San Antonio has always been a crossroads for travelers, explorers, and those on a quest for liberty. Its sights, sounds, tastes and past captivate, while friendly people, the relaxing river and a superb climate entice visitors to come back for more.

From its important role in Texas independence to its fusion of cultures, San Antonio is a truly unique and authentic destination. Explore the routes of the conquistadors, the settlements of the first missions, and the Shrine of Texas Liberty—the Alamo. San Antonio's heart is in its past but its future is in its celebration of cultures. Sites to see around downtown are the Alamo, The River Walk, La Villita, Tower of Americas, the Buckhorn Hall of Fame and several museums such as the Witte, McNay Art Museum, and SA Museum of Art. There are many fun “party crowd” places such as Dick's Last Resort, Howl at the Moon, Swigs, Pat O'Brien's, and Dirty Nellie's.



Photo provided by [visitsanantonio.com](http://visitsanantonio.com)

The Roosevelt Bar in the Menger Hotel is a must see. Teddy Roosevelt enlisted his Rough Riders there, and Carrie Nation chopped up the bar during prohibition. The Menger, opened in 1859, is the oldest continuously operating hotel west of the Mississippi River. The hotel has many ghosts and spirits, so watch your back. Hope you are a sound sleeper!

Please call the hotel at 210-223-4361 for reservations. Single/Double rooms are \$135 per night. Cheers and see you in San Antonio!

### **La Vonne Williams Fedynich**

2017 Program Chair/ President Elect

Local Arrangements Chair

Texas A&M University-Kingsville

---

*“The Menger,  
opened in 1859, is  
the oldest  
continuously  
operating hotel west  
of the Mississippi  
River ”*

## Graduate Student News



Alexandra (Ali) Foran

*“Graduate students who attend receive research presentation and professional development experiences that help build their professional skills.”*

The SERA Graduate Student Council would like to encourage your attendance and participation at the 40th SERA Conference to be held at the historic Menger Hotel in San Antonio, February 15-17, 2017. This conference continues to be one of the most student-friendly research conferences in the United States. The graduate students who attend receive research presentation and professional development experiences that help build their professional skills. They also are able to build relationships with graduate students and professors from universities around the region. This year, there will be several graduate student activities during the conference. Whether this is your first year attending, or you are a seasoned regular, we hope you will join us for these fun and enriching events.

### Free Hotel Room Drawing

One of the perks of attending the SERA Business Luncheon as a graduate student is the opportunity to enter the drawing for a free hotel room night. Several free hotel room nights will be awarded to students at the luncheon. To be eligible to win a free night, you must be present at the luncheon, **AND you must be a registered guest at the**

**Menger Hotel.** Please plan to attend the luncheon; the meal is delicious, the room is beautiful, and the academic networking opportunities are priceless.

### Fireside Chat

Immediately following the Presidential Invited Address, we invite graduate students to stay around for a small-group, informal discussion with the speaker. This year the Presidential Invited Speaker is the distinguished Dr. Li Cai of Advanced Quantitative Methodology and co-Director of the National Center for Research on Evaluation, Standards, and Student Testing (CRESST) at the University of California. This will be an excellent opportunity for students to discuss their thoughts and ask questions.

### Graduate Student Meeting

We invite all graduate students to attend the Graduate Student Meeting on February 16, **immediately after the Fireside Chat** (check the program for meeting room and time). At the meeting, we will thank the outgoing SERA Graduate Student Council for their service, select the SERA Graduate Student Council for the coming year (SERA 2018), and elect the SERA Graduate Student Representative who will serve as a voting member of

the SERA Board. Each university that is represented by five or more graduate students at the meeting is eligible for one position on the council. For universities with fewer than five graduate students at the meeting, one at-large position will be elected collectively from the universities. Serving as a campus representative is an excellent way to build your leadership skills both with the graduate students at your university and the leadership within your department. The current SERA Graduate Student Representatives have represented you very well this year. We greatly thank all of them for their service. If you believe that you might be interested in serving as a student representative for your university at SERA 2018, please contact your current representative for details.

### Graduate Student Social Event

If you have attended SERA in the past, you may remember that after the Graduate Student Meeting, there is a Graduate Student Social. Please join us for this opportunity to mingle with colleagues from various universities. Information will be distributed via email as well as through the Graduate Student Council soon. We look forward to

## Graduate Student News (Continued from pg. 6)



Photo provided by [visitsanantonio.com](http://visitsanantonio.com)

*Submit your manuscript for the Outstanding Graduate Student Paper award. The winner will be awarded \$750 at the conference.*

meeting you and sharing a time of fun and fellowship.

### Paper Awards

There are three different categories through which student-authored submissions may receive awards.

1. The **Dean's Awards** are sponsored by individual universities. Entries must be a paper submitted by students from a sponsoring university and presented as a paper session or symposium session at the annual conference. Paper submissions for the Deans' Award are due to Ali Foran at [aliforan@tamu.edu](mailto:aliforan@tamu.edu) by January 8, 2017.

- The paper must be authored only by graduate students.

- If multiple authors write the papers, the choice can be made for the award to be

given to the first author or split among all the authors.

- If 3 or fewer submissions are received for a given university, at the discretion of the awards committee, based on their reviews of the submissions, either 0, 1, or 2 Dean's Awards may be made. All participants will be advised if no awards will be made. Also, awards will not be given for institutions at which Deans decide not to participate.

If you do not receive a receipt confirmation via e-mail by 5:00 P.M. January 15, 2017, please contact Ali Foran at [aliforan@tamu.edu](mailto:aliforan@tamu.edu).

2. The **Outstanding Graduate Student Paper** is an award of \$750 and a certificate will be given for the best paper presented by a graduate student member at the annual meeting. For a paper to be eligible, the work

must be completed before the annual meeting and then presented in a paper or symposium session. The award winner will be announced at the SERA luncheon on Thursday, February 16, 2017. Please note that the Outstanding Graduate Student Paper Award competition is for completed graduate student research (i.e., ONLY Division I through V papers), and may include theses or dissertations, as well as other graduate student research. Submissions are due to Prathiba Natesan at [prathiba.natesan@unt.edu](mailto:prathiba.natesan@unt.edu) by January 8, 2017.

3. The **SERA Bruce Thompson Outstanding Paper** is chosen from all papers submitted and is due by noon during the conference, Thursday, February 16, 2017.

[Continued on Page 10](#)

*All of our past  
webinars can be  
found on the SERA  
Website*

## Professional Development Webinars

We recognize that opportunities for continued professional development are important to our membership. Throughout the academic year, SERA will host various webinars about topics of interest to the membership. Webinars are hosted using the Adobe connect platform and can be accessed by going to the following link on the day of the webinar: <https://lamar.adobeconnect.com/sera/>

Please join us for these great opportunities. For questions or concerns regarding access to these webinars, please contact [forrest.lane@shsu.edu](mailto:forrest.lane@shsu.edu).

**Thursday, October 27, 2016 (12–1pm)**

*“The ‘Why’ and ‘How’ of Analyzing Data with a Nested Structure via Hierarchical Linear Modeling (HLM)”*



**Grant Morgan**  
Baylor University

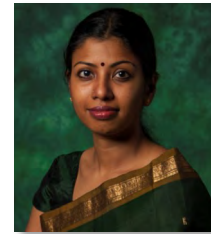
This webinar will discuss conceptual and mathematical reasons why data with a nested structure (e.g., students nested within classrooms) must be analyzed differently than data without a nested structure. The presentation will illustrate simple prediction with a single variable, two variables without a nested structure, and then two variables with a nested structure. The output and model results discussed in the webinar will also be provided from popular software packages for offline review.

*Prerequisite:* A basic understanding of statistical concepts, such as descriptive statistics (e.g., mean, variance, correlation).

[Click Here to Register](#)

**Thursday, November 17, 2016 (12–1pm)**

*“Statistical Simulation: A Hands-On Approach to Learning and Playing with Statistics in R”*



**Prathiba Natesan**  
University of North Texas

This webinar will introduce the concept of statistical simulation along with hands-on instruction to researchers at all levels. The advent of modern computing has made simulation accessible to researchers with minimal programming experience. This presentation will illustrate how statistical simulation is one of the best methods to understand the nuts and bolts of statistical concepts.

*Prerequisite:* A basic understanding of R (importing data, setting working directory, creating a matrix, and basic functions).

[Click Here to Register](#)



## SERA Bruce Thompson Outstanding Paper Award

Applicants must submit either 5 single-spaced copies of the paper at the conference registration desk during the annual meeting, mail paper submissions to the SERA Executive Director Linda Zientek, or send an electronic word version of the paper with the subject heading "SERA Bruce Thompson Paper Submission" to [lrzientek@shsu.edu](mailto:lrzientek@shsu.edu) by Thursday September 16, 2017 at noon. An individual may submit only one paper on which he/she is author or co-author of a paper presented at the conference. The winner of the Outstanding Paper Award in the prior year is not eligible for consideration. Active officers of the SERA Executive Council, including appointed officers, are not eligible.

**Award:** \$1,000; present paper at AERA in 2017

**Deadline:** February 16, 2017 (12:00pm)

### Postal/Courier Service Only

Linda Zientek, SERA Executive Director  
2017 Outstanding Paper Award  
Sam Houston State University  
Dept. of Mathematics & Statistics  
Huntsville, Texas 77341

## SERA Outstanding Graduate Student Paper Award

The first author must be a graduate student. Papers must be completed graduate student research (Division I through Division V); may be a condensed version of a thesis or dissertation, as well as other research; and are presented as papers or symposiums at the conference. Works in progress (Division VI) and preliminary works, such as literature reviews, class projects, proposals, are not eligible for the award.

**Award:** \$750.

**Deadline:** January 8, 2017 (by 5:00 pm)

### Submit Electronically

Prathiba Natesan  
SERA President  
[Prathiba.Natesan@unt.edu](mailto:Prathiba.Natesan@unt.edu)

### SERA Paper Repository

Authors of papers can upload or delete papers from the repository.

To access the repository, you will need to use the same e-mail address used when submitting your proposal.

Access the repository by going to <http://sera-edresearch.org/repository>

## SERA Dean's Awards

Papers for consideration of the SERA Dean's Award must **only** be authored by graduate students. The award may be given to the first author only or to all authors. Completed graduate student research (Division I – V) and works in progress (Division VI) are eligible. Papers can be in any form (i.e., literature reviews, explanation of statistical concepts, case studies, other), and will be judged from the perspective of how well they will further the theory of educational research.

Student recipients must be from a university that provides an award and must attend the 2017 SERA annual conference. More deans are expected to enroll soon. Students who are not enrolled in a university whose Dean of the College of Education supports this award are not eligible.

**Awards:** \$300 per university for two \$150 awards

**Deadline:** January 8, 2016 (5:00 pm)

### Submit Electronically Only

Ali Foran  
SERA Graduate Student Representative  
[aliforan@tamu.edu](mailto:aliforan@tamu.edu)

## Graduate Student Representative: Foran (Cont.)

### GRADUATE STUDENT EVENTS

Thursday, February 16, 2017

1:35–2:45	Presidential Speaker (Dr. Li Cai)
2:45–4:00	Fireside Chat
5:25–6:30	Graduate Student Meeting
6:30–???	SERA 40th Anniversary Reception

Applicants must submit either 5 single-spaced copies of the paper at the conference registration desk during the annual meeting, mail paper submissions to the SERA Executive Director Linda Zientek, or send an electronic word version of the paper with the subject heading "SERA Bruce Thompson Paper Submission" to [lrzientek@shsu.edu](mailto:lrzientek@shsu.edu) by Thursday February 16, 2017 at noon. Paper submissions should be sent by postal service to:

**Linda Zientek**  
SERA Executive Director  
Sam Houston State Univ.  
Department Of Mathematics  
& Statistics  
Box 2206  
Huntsville, Texas 77341

Electronic submissions for the SERA Bruce Thompson Outstanding Paper but are due by Noon on Thursday February 16th. For complete

submission guidelines, please see the [call for proposals](#).

The SERA 2017 board is very excited about how the conference is shaping up. I look forward to meeting each of you for a very exciting time of learning and celebration in San Antonio!

**Alexandra (Ali) Foran**  
Graduate Student Representative  
Texas A&M University

## Pre-Conference Workshop

### “Identifying and Implementing Evidence Based Practices in Educational Research”



Forrest Lane

Educational researchers and practitioners are increasingly expected to provide and implement practices that are evidence-based. The challenge is that identifying these practices may not always be clear to consumers of research. For example, how are evidence-based practices defined and what studies are considered eligible under these definitions?

This two-hour workshop at the 2017 SERA Annual Meeting will review best-practices in research design. We will discuss what it means to conduct evidence-based research and examine criteria used by grant funding agencies to

evaluate education related studies. We will also explore organizations such as What Works Clearinghouse (WWC) and review design protocols for topic areas such as:

- Early Childhood Education
- Developmental Education
- Postsecondary Education
- Teacher Training, Evaluation, and Compensation

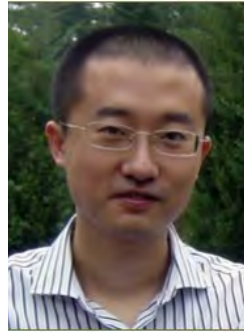
The goal of this workshop is to provide individuals with a better working knowledge of how to both design effective studies and differentiate between high and low quality research.

Forrest Lane is an assistant professor in the

developmental education administration doctoral program at Sam Houston State University. He holds a Ph.D. in Educational Research from the University of North Texas. He is the author of more than 30 peer-reviewed publications and presentations and serves on the editorial boards of the *Journal of College and Character*, *Student Affairs Research and Practice*, and the *Journal of the First Year Experience and Students in Transition*. His research interests include the use of propensity score matching in quasi-experimental design and student development in college.

## Presidential Invited Speaker

**Dr. Li Cai, University of California—Los Angeles**



### “Playing in others' backyard: A personal story of applying and innovating quantitative methodology”

Li Cai will share personal stories and experiences of working in collaborator capacity as a quantitative methodologist in interdisciplinary research teams. It is argued that quantitative methodologists should aim to understand and contribute to the substantive missions of the research in order to make the most out of the collaboration and to advance methodology. Substantive researchers should also avoid seeing methodologists as merely data analysts with bags of tricks, but rather a partner in research design.

Li Cai is Professor of Advanced Quantitative Methodology and co-Director of the National Center for Research on Evaluation, Standards, and Student Testing (CRESST) at the University of California, Los Angeles. He is the recipient of the Gulliksen Psychometric Research Fellowship and the prestigious **Presidential Early Career Award for Scientists and Engineers**.

## SERA Research Grants

SERA is dedicated to furthering the advancement of graduate student and junior faculty educational research. This year, SERA will award two (2) competitive Research Grants at the 2017 conference for up to \$1000. One award will be given to a doctoral student. The other award will be given to an assistant professor.

To be considered for this grant award, **proposals are**

**due by January 8 2017.** Proposals must be submitted to Jana Willis at [willis@uhcl.edu](mailto:willis@uhcl.edu)

Previous award winners cannot reapply in subsequent years, unless they received a SERA grant award as a graduate student. SERA Board Members (either elected or appointed) are not eligible. The award amounts will not be channeled through institutions; thus, there are

no overhead or indirect costs. Institutions may not charge overhead or indirect costs on SERA Research Grants. In order to receive the final grant funds, a manuscript in article format with the quality for submission to a journal article must be submitted the first day of the February Annual Conference at the end of subsequent annual conference.

---

*Click [here](#) for the link to a recorded webinar about the SERA Research Grants.*



## 2016 SERA Election Ballot

Current members are eligible to vote in the SERA 2016 election and should have received an electronic ballot. If you experience any difficulty accessing your ballot or have any questions concerning the election, please contact Linda Zientek at [lrzientek@yahoo.com](mailto:lrzientek@yahoo.com) and Susan Troncoso-Skidmore at [skidmore@shsu.edu](mailto:skidmore@shsu.edu).

Please take the time to cast your vote. Each vote represents a valued choice and provides you an opportunity to have your voice heard. **The polls close at 11:59 p.m., U.S. central daylight time on November 11, 2016.**

## Candidates Selected for the Ballot

Click [here](#) to read candidate biographies.

Position	Candidate	Institution
President-elect	Forrest Lane	Sam Houston State University
Secretary	Lesley Leach	Tarleton State University
Member-at-Large	Sandra Acosta	Texas A&M University
Member-at-Large	Scott Bailey	Stephen F. Austin State University
Member-at-Large	Dittika Gupta	Midwestern State University
Member-at-Large	Tonya Jeffery	Texas A&M University—Corpus Christi
Member-at-Large	Jana Willis	University of Houston—Clear Lake

## About the HARE Electoral System

SERA elections use the Hare system. This system reallocates votes in races with more than 2 candidates until each position obtains a majority of the votes cast. Sometimes this system is also called the "Instant Run-off Voting System." For example, if 3 candidates were running for one office, and the first round rankings were:

Geri	Sue	Bob	Voter
3	1	2	"A"
3	1	2	"B"
1	3	2	"C"
3	2	1	"D"
1	3	2	"E"
2	3	1	"F"
1	3	2	"G"
1	3	2	"H"
3	2	1	"I"
4	2	3	First place votes

➔ Because no candidate received 5 or more of the 9 first place votes, Voters "A's", "B's", "D's", and "I's" ranks for the last-place candidate, Sue, would be reallocated to the remaining candidates, and Sue would be eliminated as a candidate, as follows:

At this point, Bob has a majority of the 9 votes, and would be elected, even though Geri had more first place votes than Bob in the initial round of vote counting.

Geri	Sue	Bob	Voter
(2)		(1)	"A"
(2)		(1)	"B"
1		2	"C"
(2)		1	"D"
1		2	"E"
2		1	"F"
1		2	"G"
1		2	"H"
(2)		1	"I"
4		5	First place votes

## Welcome New Board Members



Jana Willis

**Jana Willis** currently serves as Chair of the Department of Literacy, Library, and Learning Technologies at the **University of Houston - Clear Lake**. Jana is an active member of the Classroom Management Special Interest Group (SIG) as well as Division K (Teaching and Teacher Education) within AERA. She serves as Games and Simulation SIG Chair for the Society for Information Technology in Teacher Education. Her research interests include serious games in PK-12, game-based learning, digital stories, technology integration, and self-efficacy.

*Member-at-Large*  
*Term: 2014-2017*

*Graduate Student*  
*Representative*  
*Term: 2016-2017*

**Alexandra "Ali" Foran** is a Doctoral student in Curriculum and Instruction with a focus in mathematics education at Texas A&M University. She has been teaching mathematics and mathematics education courses at the university level for over 4 years. Her current research focuses on undergraduate preservice teacher preparation in the teaching and writing of mathematical word problems.



Alexandra (Ali) Foran

## Looking for Volunteer Opportunities?

A great way to get involved in SERA is to volunteer. Some opportunities include serving as a proposal reviewer, division co-chair, or assisting with technology needs and services. Another great opportunity is to help with conference registration. Volunteers will welcome participants and provide various conference materials. Anyone interested in serving as a registration desk volunteer should contact Forrest Lane at [forrest.lane@shsu.edu](mailto:forrest.lane@shsu.edu) or by phone at (936)294-4287.

## Important Dates & Reminders

### 2016

- EARLY NOV:** Proposal disposition decisions e-mailed to first authors
- EARLY DEC:** DRAFT conference program posted on the SERA website
- 15 DEC:** DEADLINE for RECEIPT of payment from any school wanting to participate in the SERA Dean's Awards program

### 2017

- 8 JAN:** DEADLINE for SERA Research Grant Proposals
- 8 JAN:** LAST day to register for a room in the conference hotel at the conference rate, only if rooms are still available
- 8 JAN:** DEADLINE for receipt by the SERA Graduate Student Representative of an electronic copy of submissions for the SERA Dean's Awards.
- 8 JAN:** DEADLINE for receipt by the SERA President of an electronic copy of submissions for the SERA Outstanding Graduate Student Paper Award.
- 8 JAN:** DEADLINE for receipt of copy of your paper by the Discussant assigned to your presentation session only for Division VI ("Student Research In Progress") papers
- noon 16 FEB:** DEADLINE for receipt of an electronic copy or 5 paper single-sided hard copies of submissions to the SERA Executive Director to be considered for the SERA Bruce Thompson Outstanding Paper Award.

## SERA Board Members and Appointments

<b>President</b>	Prathiba Natesan <i>University of North Texas</i>	<b>Secretary</b>	Julie Combs <i>Sam Houston State University</i>
<b>President-Elect/Program Chair</b>	La Vonne Williams Fedynich <i>Texas A&amp;M University—Kingsville</i>	<b>Graduate Student Representative</b>	Alexandra Foran <i>Texas A&amp;M University</i>
<b>Past-President</b>	Shirley Matteson <i>Texas Tech University</i>	<b>Members-at-Large: 2014–2017</b>	Tonya Jeffery <i>Texas A&amp;M University—Corpus Christi</i> Lesley Leach <i>Tarleton State University</i> Jana Willis <i>University of Houston—Clear Lake</i>
<b>Treasurer</b>	Kim Nimon <i>University of Texas—Tyler</i>	<b>Members-at-Large: 2015–2018</b>	Grant Morgan <i>Baylor University</i> Forrest Lane <i>Sam Houston State University</i> Ken Young <i>Lamar University</i>
<b>Executive Director</b>	Linda Zientek <i>Sam Houston State University</i>	<b>Members-at-Large: 2016–2019</b>	Mordecai Brownlee <i>St. Phillips College</i> Suzanne Lindt <i>Midwestern State University</i> Celia Wilson <i>Texas Wesleyan University</i>
<b>Executive Director Emeritus</b> <b>Historian</b>	Bruce Thompson <i>Texas A&amp;M University</i>		
<b>Deputy Historian</b>	Victor Willson <i>Texas A&amp;M University</i>		
<b>Director of Information Technology</b> (Non Board Appointment)	Susan Troncoso Skidmore <i>Sam Houston State University</i>		

# See You in San Antonio, TX February 15-17, 2017

