

Fall 2019



SERA Newsletter

Southwest Educational Research Association

Inside this issue:

THE PREZ SAYS	1-2
NEWS FROM OUR PROGRAM CHAIR	3
FUTURE CONFERENCE DATES AND LOCATIONS	4
PRE-CONFERENCE WORK-SHOP	5
SERA GRANT AWARDS	6
SERA AWARD INFORMATION	7
WHERE ARE THEY NOW?	8
GRADUATE RESEARCH NEWS	9-10
2020 PRESIDENTIAL SPEAKER	11
ARLINGTON PREVIEW	12
SERA BOARD MEMBERS	13
THANK YOU!	14-15
2019-2020 GRADUATE STUDENT COUNCIL	15
VOTING INFORMATION	16
IMPORTANT DATES	17

The Prez Says...

The SERA Board of Directors and I look forward to seeing each of you in Arlington for another great conference. This is a new location for hosting the annual conference. Please read more about the venue in the comments from the Local Arrangements Chair. The annual conference is a fantastic way to establish and renew collaborative relationships with scholar-practitioners in educational research, share cutting-edge research, and explore new research possibilities.

The 43rd Annual meeting of the SERA will be held at the Hilton Hotel in Arlington on February 12-14, 2020. Throughout this newsletter you will find details about the conference, including links to the annual meeting, conference information from the **Program Chair Grant Morgan**, as well as information about the presidential invited address, training sessions, and awards. One highlight we are very excited about is this year's presidential speaker, **Michael Feuer**, Dean of the Graduate School of Education and Human Development and Professor of Education Policy at George Washington University. More information about this session is available in our Program Chair News.



Shirley Matteson
Texas Tech University

The SERA repository will be up and running again this year. We will continue to offer SERA members the opportunity to upload their papers before the conference begins as well as download the papers for other presentations. Although only first authors will be able to upload and remove papers from the repository, **EVERYONE** will be able to login to the SERA repository site with the same e-mail address they used when submitting their proposals. They will then be asked to establish a unique password in order to maintain the integrity of the system and ensure that only the authors of papers can upload or delete papers from the repository. More information about the SERA repository will be communicated via e-mail. Be sure to check e-mails from the Executive Director as the conference dates get closer.

EDITOR:

Wendi K. Zimmer
Texas A&M University

The SERA Early Career Faculty Mentoring Program, organized by **Michelle Peters**, will continue with another session at this year's conference. The program aims to provide support for junior faculty in the form of mentoring, networking, resource sharing, and grants. Look for a junior faculty session in the 2020 program to find ways you can be mentored as a junior faculty member, apply for grants, or serve as a mentor if you are a more experienced SERA member.

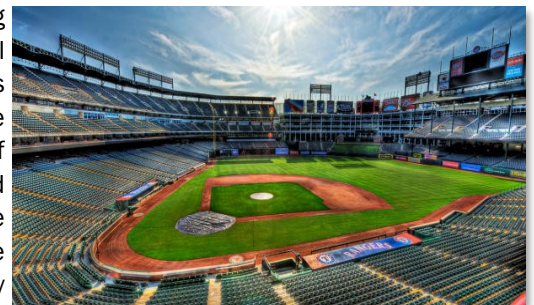


Photo Courtesy of the Arlington Convention & Visitors Bureau

Continued on Page 2

“If you are interested in building your research skills, make sure to attend one of the SERA training workshops.”

SERA Repository

The SERA Paper Repository will open on **January 15, 2020**. The use of the repository is optional, but we highly encourage you to upload a digital copy of your paper. This provides documentation of your effort and is a great way to access the papers presented by other members at this year's conference.

You can access the repository by going directly to the SERA website or by clicking on the following link:

[Repository Link](#)

The Prez Says from page 1

The SERA Early Career Research Grants Program, guided by **George Moore**, will have several recipients presenting their research projects at a special session during the annual conference. The early career grant initiative provides up to \$1000 in funding for a doctoral student and an assistant professor at a 4-year institution.

Membership numbers in SERA continue to remain strong. The Board strives to ensure that SERA membership dues remain low and that the conference is a student-friendly, affordable opportunity for current and aspiring scholars to engage in the exchange of research. The SERA conference has something for everyone. If this is your first SERA conference, I recommend that you attend the *Navigating Through and Getting the Most from SERA Session* provided by **Linda Reichwein Zientek** and **Susan Troncoso Skidmore**. If you are interested in building your research skills, make sure to attend one of the SERA training workshops. I

also encourage you to attend as many paper sessions as you can that are related to your research area.

Be sure to take the time to mingle with colleagues at breakfast and conference breaks. The SERA conference offers the perfect opportunity to develop new research ideas, strengthen your existing ideas, and make connections to effectively turn your ideas into publications. I look forward to seeing you in Arlington!

Shirley Matteson
SERA President
Texas Tech University



RIGHT: Robert Pianta presents the 2019 Presidential Address to SERA participants.

LEFT: Bruce Thompson shares the history of SERA at the 2019 conference luncheon.



News from Our Program Chair

The 2020 conference begins on Wednesday afternoon, February 12, in Arlington, at the Hilton Arlington, with one ticketed training session. **Robin Henson** from University of North Texas and **Sarah Ferguson** from Rowan University will be offering **“Survey Design and Instrument Development: How Not to Collect Meaningless Data.”** Numerous additional workshops and presentations are planned throughout the conference on topics such as the dissertation process, academic writing, and tips and tools for conducting quantitative, qualitative, and mixed methods research.

At the 2019 SERA conference, there were nearly 250 research presentations, workshops, symposia, and innovative sessions. Division VI continues to be a popular avenue for dissemination of graduate student members’ “work in progress.” This division provides graduate students the opportunity to present research in progress, including dissertations or theses, that have not yet been defended. All sessions in Division VI are led by discussants that have distinguished careers as researchers. Summary papers presented in Division VI will need to be submitted to the discussant on or before January 8th.

The draft program should be complete by early December and will be posted to the SERA website. Authors can check their presentation dates and times from the posted program and make travel plans accordingly.

During the conference, projectors for laptops will be provided in all presentation rooms. Presenters will need to bring their own laptop and their presentation on a flash drive. One computer per session should be used to minimize transition between presentations. Presenters will have 10-13

minutes for each presentation, with a few minutes left for questions or discussion. We recommend limiting your presentation to about 10 slides. Please note that Power Point presentations are not required.

Presentations are strictly limited to a maximum of 13 minutes in order for all presenters to have sufficient time to present their research. All presenters should bring 10-15 copies of completed papers (“in progress” papers for Division VI) for distribution during their presentation. Alternatively, presenters can submit their paper electronically to the SERA repository. The SERA website will contain the most up to date information on conference activities so please visit <http://sera-edresearch.org/> for the latest news.

We look forward to seeing you in Arlington for the 43rd annual SERA conference!

Grant Morgan
2020 Program Chair/President Elect
Baylor University



Grant Morgan
Baylor University

“The draft of the program should be completed by early December and will be posted to the SERA website.”



Left: 2018-2019 SERA President, Forrest Lane and 2019-2020 SERA President, Shirley Matteson.

Updated Policy on Conducting Research at SERA

No surveys, data collection, interviews, or any sort of human subjects research shall be conducted at the SERA annual meeting, or from the SERA membership, unless the research is first approved by the SERA board. SERA members in violation are subject to being removed from membership, and any SERA Board member in violation is subject to being removed from office for cause.

Mark Your Calendar for Future Conference Dates and Locations



2020 Conference

At the Arlington-Hilton (Arlington, TX)

Wednesday, February 12th—Friday, February 14th

Photo courtesy of Arlington-Hilton Hotel



2021 Conference

At the Menger San Antonio (San Antonio, TX)

Wednesday, February 3rd—Friday, February 5th

Photo courtesy of the Menger Hotel



2022 Conference

At the Hotel Monteleone (New Orleans, LA)

Wednesday, February 23rd—Friday, February 25th

Photo courtesy of Hotel Monteleone

Pre-Conference Workshop

Survey Design and Instrument Development: How Not to Collect Meaningless Data

This workshop, presented by Robin Henson and Sarah Ferguson, will focus on developing survey questionnaires and research instruments for data collection in education research. Particular focus will be given to validity and reliability concerns, providing guidance on developing items and tools to consistently measure what you actually mean to measure (and how to know if you are not doing this). Additionally, the workshop will discuss the process of developing these tools and steps that should be taken to evaluate quality throughout the development stages (a.k.a. planning to not fail!). Participants can bring a survey or instrument they are currently working on, an idea they have for a future project, and/or an open mind and willing heart to learn (with no clear ideas of what they are doing),

Robin Henson is a professor and department chair in the Department of Educational Psychology at the University of North Texas. He has been at UNT since 2000 and was at the University of Southern Mississippi for one year prior. Robin received his doctorate in educational psychology from Texas A&M University, has two masters degrees in general and clinical psychology from the University of Houston – Clear Lake, and a double major bachelor's in biblical studies and applied psychology from Evangel University. He is a past associate editor of *Educational and Psychological Measurement*, and has served on the editorial boards of multiple journals. He teaches research design and applied statistics and his research interests span across a range of areas, but most commonly center on applied general linear model statistics and self-efficacy theory and application.

Sarah Ferguson is an Assistant Professor of Quantitative Methods at Rowan University in Glassboro, New Jersey. She is an applied methodologist in education research, focusing on the application of advanced research methods and statistics approaches to issues in education. Prior to coming to Rowan University, Sarah was a certified teacher in the state of Texas with certifications in Elementary Education, Middle School Science, and High School Science, and went on to receive her doctorate from the University of North Texas in Educational Research. Her current research focuses on two areas: the education and utilization of quality research methods and analyses, and supporting the career development pathway for individuals from high school to career in STEM fields.



Robin Henson
University of North Texas



Sarah Ferguson
Rowan University

This pre-conference workshop is \$40 through online registration or \$50 at the door.

SERA Research Grants

Two research grants are available to SERA members.

The **SERA Early Career Research Grant—Assistant Professor** is available to those individuals who meet the following criteria:

- An assistant professor employed at a 4-year institution in a tenure-track position
- Attended and presented at SERA within the last three years
- Collaborate with a designated mentor. Applicants are encouraged to collaborate with a mentor through the SERA Mentoring Initiative.

The **SERA Early Career Research Grant—Doctoral Candidate** is available to those individuals who meet the following criteria:

- A doctoral candidate who has defended a dissertation proposal approved by the dissertation committee.
- Attended and presented at SERA within the last 3 years.

Both SERA Research Grant awards provide up to \$1,000 for 1-year projects and may be awarded each year. Institutions may not charge indirect or overhead costs on these awards. Application requirements are listed on the SERA website.

Funding restrictions

Previous award winners cannot reapply for the same award in subsequent years. SERA Board Members (either elected or appointed) are not eligible.

Evaluation criteria

The evaluation criteria will include: Quality of literature review, relevance of the topic, relevance of research questions, the strength of the methodology section, and quality of writing. An additional criterion will be whether or not the analytic methods fit the research questions.

Reporting requirements

All Research Grantees will be required to submit a SERA proposal and send a copy of the proposal to the Executive Director. In order to receive the final grant funds (see funding disbursement), a manuscript, in article format with the quality for submission to a peer-reviewed journal, must be submitted by the first day of the February Annual Conference the following year. For example, an award made in 2019 would require grant recipients to submit their manuscript prior to the 2020 annual conference.

Funding disbursement

Grantees will receive \$500.00 upon award selection and \$500.00 after presenting at the next February SERA Annual Conference (receipts must be submitted). Travel expenses to conferences may not exceed 30% of award total. The award amounts will not be channeled through institutions; thus, there are no overhead or indirect costs.

Application Deadlines

Applications for these Research Grants will be open once a year. Grant proposals must be submitted to the Grant Coordinator, George Moore at gwm002@shsu.edu and the SERA Executive Director, Linda Zientek at lrzientek@shsu.edu by **April 1** of each year and awardees will be selected by **May 1**.



Michelle Peters

University of Houston—Clear Lake



George Moore

Sam Houston State University

Apply by April 1st!

SERA Research Grant awards provide up to \$1,000 for 1-year projects and may be awarded each year.

SERA Bruce Thompson Outstanding Paper Award

Authors are encouraged to email copies of the paper submitted for presentation at the annual meeting to the SERA Executive Director, Linda Zientek. An individual may submit only one paper on which he/she is author or co-author. The winner of the Outstanding Paper Award in the prior year is not eligible for consideration. Active officers of the SERA Executive Council, including appointed officers, are not eligible.

Award: \$1,000; present paper at AERA in 2021

Deadline: November 15, 2019 (12:00pm)

Submit Electronically

Linda Zientek
SERA Executive Director
lrzientek@shsu.edu

Postal/Courier Service

Linda Zientek, SERA Executive Director
2015 Outstanding Paper Award
Sam Houston State University
Dept. of Mathematics & Statistics

SERA Outstanding Graduate Student Paper Award

The first author must be a graduate student. Papers must be completed graduate student research (Division I through Division V); may be a condensed version of a thesis or dissertation, as well as other research; and are presented as papers or symposiums at the conference. Works in progress (Division VI) and preliminary works, such as literature reviews, class projects, proposals, are not eligible for the award.

Award: \$750.

Deadline: January 8, 2020 (by 5:00 pm)

Submit Electronically

Shirley Matteson
SERA President
shirley.matteson@ttu.edu

Paper award winners will be featured in the Spring 2020 newsletter.

SERA Dean's Awards

Papers for consideration of the SERA Dean's Award must **only** be authored by graduate students. The award may be given to the first author only or to all authors. Completed graduate student research (Division I – V) and works in progress (Division VI) are eligible.

Papers can be in any form (i.e., literature reviews, explanation of statistical concepts, case studies, other), and will be judged from the perspective of how well they will further the theory of educational research.

Student recipients must be from a university that provides an award and must attend the 2019 SERA annual conference. More deans are expected to enroll soon. Students who are not enrolled in a university whose Dean of the College of Education supports this award are not eligible.

Awards: \$300 per university for two \$150 awards

Deadline: January 8, 2019 (5:00 pm)

Submit Electronically Only

Katherine Vela
SERA Graduate Student Representative
kvela07@tamu.edu

WHO'S WHO OF SERA

Outstanding Paper Award Winner—Where are They Now?

For the past 35 years, SERA has recognized outstanding research enhancing the field of education through various outstanding paper awards. Many of the award winners joined SERA as graduate students and have record success in their academic careers. This column serves to highlight past winners and give us a glimpse of where they are now.

In this volume, we highlight the winner of the 1985 paper award, Walter Parker.



Walter Parker

University of Washington
—Seattle

Walter C. Parker is Professor Emeritus of Curriculum & Instruction and (by courtesy) Political Science at the University of Washington in Seattle. He studies civic education in schools and the depth-breadth problem in curriculum development. He is a member of the National Academy of Education and a Fellow of the American Educational Research Association.

His books include *Educating the Democratic Mind* (1996), *Teaching Democracy* (2003), *Social Studies Today: Research and Practice* (2015), and *Social Studies in Elementary Education* (2017). His most recent research, funded by the Spencer Foundation and George Lucas Educational Foundation, examined the high school government course. His research team developed and tested iteratively a project-based model for the Advanced Placement version of this course. The model aims for deeper learning rather than superficial coverage and student engagement rather than test-prep drudgery. An open-access report is available [here](#).

Want to nominate someone for the “Who’s Who of SERA”?

Send nominations to the SERA Executive Director, Linda Zientek (lrzientek@shsu.edu).



Left: 2019 SERA luncheon

Graduate Student News

The SERA Graduate Student Council would like to encourage your attendance and participation at the 43rd Annual SERA Conference to be held at the Hilton Arlington Hotel in Arlington, February 12-14, 2020. This conference continues to be one of the most student-friendly research conferences in the United States. The graduate students who attend receive research presentation and professional development experiences that help build their professional skills. They also are able to build relationships with graduate students and professors from universities around the region. This year, there will be several graduate student activities during the conference. Whether this is your first year attending, or you are a seasoned regular, we hope you will join us for these fun and enriching events.

Hotel Room Drawing

One of the perks of attending the SERA Business Luncheon as a graduate student is the opportunity to enter the drawing for \$100 toward your room night. The drawing will be held at the annual luncheon. To be eligible to win, you must be present at the luncheon, AND you must be a registered guest at the Hilton Arlington. Please plan to attend the luncheon; the meal is delicious, the room is beautiful, and the academic networking opportunities are priceless.

Fireside Chat

Immediately following the Presidential Invited Address, we invite graduate students to stay around for a small-group, informal discussion with the speaker. This year the Presidential Invited Speaker is Michael Feuer, Dean of the Graduate School of Education and Human Development and Professor of Education Policy at the George Washington University. Dr. Feuer will host the "Fireside Chat" with graduate students

immediately following the presidential invited address. This is an excellent opportunity for students to discuss their thoughts and ask questions.

Graduate Student Meeting

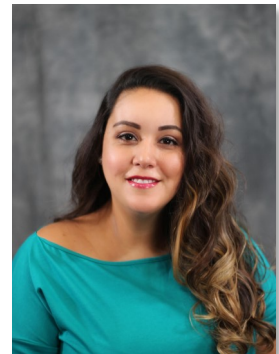
We invite all graduate students to attend the Graduate Student Meeting on February 13th (check the program for meeting room and time). At the meeting we will:

- a) thank the outgoing SERA Graduate Student Council for their service,
- b) select the SERA Graduate Student Council for the coming year (SERA 2021),
- c) elect the SERA Graduate Student Representative who will serve as a voting member of the SERA Board, and
- d) award door prizes (must be present to win!).

Each university that is represented by five or more graduate students at the meeting is eligible for one position on the council. For universities with fewer than five graduate students at the meeting, one at-large position will be elected collectively from the universities. Serving as a campus representative is an excellent way to build your leadership skills both with the graduate students at your university and the leadership within your department. The current SERA Graduate Student Representatives have represented you very well this year. We greatly thank all of them for their service. If you believe that you might be interested in serving as a student representative for your university at SERA 2021, please contact your current representative for details.

Graduate Student Social Event

If you have attended SERA in the past, you may remember that after the Graduate Student Meeting there is a Graduate Student



Katherine Vela
Texas A&M University

*"Division VI
provides graduate
students a venue for
feedback on works-in
-progress."*

Graduate Student News Cont.

Social. This year we will start a new tradition of meeting at the Rock Wood Fired Kitchen of Arlington which is a funky locale offering American grill fare and wood-fired pizza in a lively, rock-&-roll-themed space. The Rock Wood Fired kitchen offers live music on Thursdays and is within walking distance of the hotel. We look forward to meeting you and having a rockin' good time.

Paper Awards

There are three different categories through which student-authored submissions may receive awards.

1. **The Deans' Awards** are sponsored by individual universities. Entries must be submitted by students from a sponsoring university and only students from participating universities are eligible to win these awards. Paper submissions for the Deans' Award are due to Katherine Vela at kvela07@tamu.edu by January 8, 2020. The paper must be authored only by graduate students. If multiple authors write a paper, the choice can be made for the award to be given to the first author or split among all the authors.

If 3 or fewer submissions are received for a given university, at the discretion of the awards committee, based on their reviews of the submissions, either 0, 1, or 2 Dean's Awards may be made. All participants will be advised if no awards will be made. Also, awards will not be given for institutions at which Deans decide not to participate.

2. **The Outstanding Graduate Student Paper** is an award of \$750 and a certificate will be given for the best paper presented by a graduate student member at the annual meeting. For a paper to be eligible, the work must be completed before the annual meeting and then presented in a paper or symposium session. The award winner will be announced at the SERA luncheon on Thursday, February 13, 2020. Please note that the Outstanding Graduate Student Paper Award competition is for completed graduate student research (i.e., ONLY Division I through V papers), and may include theses or dissertations, as well as other graduate student research. Submissions are due to Shirley Matteson at shirley.matteson@ttu.edu by 5:00 pm on January 8, 2020.

3. **The SERA Bruce Thompson Outstanding Paper** is chosen from all papers submitted and is due November 15, 2019. Submission should be sent to Linda Zientek at lrzientek@shsu.edu.

For complete submission guidelines, please see the [call for proposals](#). I look forward to meeting each of you for a very exciting time of learning and celebration in Arlington!

Right: Graduate students meet with Robert Pianta for a fireside chat at the 2019 SERA conference



2020 Presidential Invited Address

Self Evident Truths and Education Research: Past, Present, Future



Michael Feuer

George Washington University

*Dr. Feuer will also
hold a “fireside
chat” for graduate
students!*

In this talk Michael Feuer will offer reflections on the origins of the “evidence movement,” in the broader context of the American experiment with science policy, and offer a set of messages to guide processes, products, and usefulness of education research.

Michael Feuer is Dean of the Graduate School of Education and Human Development and Professor of Education Policy at The George Washington University, and immediate past-president of the National Academy of Education. Before coming to GW in 2010, Michael held positions at the National Research Council of the National Academies: he was the founding director of the Board on Testing and Assessment, founding director of the Center for Education, and executive director of the Division of Behavioral and Social Sciences and Education. Prior to joining the NRC in 1993, Michael was a senior analyst and project director at the US Congress Office of Technology Assessment.

Michael received his BA in English from Queens College (CUNY), an MA in public management from the Wharton School, and a PhD in public policy analysis from the University of Pennsylvania. He was on the faculty at Drexel University from 1981-1986, and has taught courses in education policy and research at Penn and Georgetown.

In addition to many edited volumes and reports, Michael has written two books, both published by Harvard Education Press: *The Rising Price of Objectivity: Philanthropy, Government, and the Future of Education Research* (2016), and *Moderating the Debate: Rationality and the Promise of American Education* (2006). His essays, commentaries, and poems have appeared in newspapers, blogs, and magazines in the US and abroad. Michael consults regularly to educational institutions and government in the US, Israel, Europe, and the Middle East.

Michael was elected to the NAEd presidency in 2013. He is also an elected fellow of the American Association for the Advancement of Science and of the American Educational Research Association, co-chair of the Consortium for Applied Studies in Jewish Education (CASJE), and was appointed by President Barack Obama in 2014 as a member of the National Board for Education Sciences.

Michael lives in Washington, DC, with his wife, Regine, a physician with board certification in obstetrics-gynecology and addiction medicine. The Feuer's have two grown children.

A Preview of Arlington for the 2020 SERA Annual Meeting

We are looking forward to welcoming you to the 2020 SERA Annual Meeting at the Hilton Hotel in Arlington, Texas. Hilton Arlington is in the entertainment district, within a 5-minute drive of Six Flags Hurricane Harbor, and Arlington Convention Center.

There are many reasons to look forward to your visit. In addition to the numerous professional opportunities that await you at the conference, Arlington is the “American Dream City” with outstanding cuisine, music, art, and entertainment. Arlington is full of massive year-round events and things to do such as visiting the world-class [AT&T Stadium](#), [Six Flags Over Texas](#), [Six Flags Hurricane Harbor](#), and watching the [Texas Rangers](#) play. (<https://www.arlington.org/>)

Want to explore this wonderful city? There are so many free things to do:

MUSIC UNDER THE STARS. If you love music, you should make a point to visit the Levitt Pavilion. Located in the heart of Downtown Arlington. The [Levitt Pavilion](#) has been providing free outdoor concerts for 10 years.

BE INSPIRED. It's worth a trip to [Richard Greene Linear Park](#) in north Arlington to see [Caelum Moor](#), a 5-acre environmental art installation by sculptor Norm Hines. Each group of stones has its own Celtic name and distinct characteristics.

GET OUT IN NATURE. For a fun and educational day out in nature, head over to [River Legacy Parks](#), a 1,300-acre urban oasis along the Trinity River. Discover a variety of ecosystems, like bottomland forest, wetlands, and prairies, while observing different species of birds, fish, mammals, and native plants.

HISTORIC ARLINGTON. The [Historic Fielder House](#) is an Arlington institution, home to the Arlington Historical Society. Built in 1914, this house was the private residence of Mr. and Mrs. James Park Fielder, Sr.

ART AT ITS FINEST. [The Gallery at UT Arlington](#) is one of the best free activities in the city. The art gallery offers visitors a chance to enjoy a variety of work by undergraduate and graduate students at the University of Texas at Arlington.

ENJOY THE VIEW. One of Arlington's newest parks is the [Crystal Canyon Natural Area](#), the perfect place to explore the natural beauty of the city. Located in North Arlington, this 38.7-acre park has a half mile of soft surface trail for hiking.

“VEGAS BEFORE VEGAS”. For another budget-friendly slice of Arlington, visit [Top O' Hill Terrace](#). Called the “Vegas before Vegas,” Top O' Hill Terrace was a legitimate restaurant which was also a popular gambling and brothel spot in the 1920s. Group tours are given by appointment only, and a donation of \$10 per person is suggested.

*Welcome to
Arlington!*



Photo courtesy of Arlington Convention & Visitors Bureau

SERA Board Members and Appointments

President	Shirley Matteson <i>Texas Tech University</i>	Secretary: 2019-2021	Lesley Leach <i>Tarleton State University</i>
President-Elect/ Program Chair	Grant Morgan <i>Baylor University</i>	Graduate Student Representative	Katherine Vela <i>Texas A&M University</i>
Past-President	Forrest Lane <i>Sam Houston State University</i>	Members-at-Large: 2017–2020	Sandra Acosta <i>Texas A&M University</i>
Treasurer	Kim Nimon <i>University of Texas–Tyler</i>		Emma Bullock <i>Sam Houston State University</i>
Executive Director	Linda Zientek <i>Sam Houston State University</i>	Members-at-Large: 2018–2021	Dittika Gupta <i>Midwestern State University</i>
Director of Information Technology	Susan Troncoso Skidmore <i>Sam Houston State University</i>		Sandra Nite <i>Texas A&M University</i>
Executive Director Emeritus Historian	Bruce Thompson <i>Texas A&M University</i>		Aaron Zimmerman <i>Texas Tech University</i>
Deputy Historian	Victor Willson <i>Texas A&M University</i>	Members-at-Large: 2019-2022	Marsha Sowell <i>Texas A&M University–Kingsville</i>
Deputy Treasurer	Grant Morgan <i>Baylor University</i>		Michelle Peters <i>University of Houston–Clear Lake</i>
Newsletter Editor	Wendi Zimmer <i>Texas A&M University</i>	SERA Early Career Faculty Mentoring Initiative	George Moore <i>Sam Houston State University</i>
Audio Visual	Aaron Zimmerman <i>Texas Tech University</i>	SERA Early Career Research Grant Initiative	Michelle Peters <i>University of Houston–Clear Lake</i>
			Chrissy Cross <i>Stephen F. Austin University</i>

Individuals are nominated by the membership each fall to serve on the SERA board. All current members are eligible to vote and receive an electronic ballot. SERA elections use the Hare system and at-large member candidates serve a three-year term beginning at the end of each annual meeting.

Thank you to our San Antonio Local Arrangements Chair

Mordecai Ian Brownlee currently serves as the Vice President for Student Success at St. Philip's College in San Antonio, Texas. In addition, he serves as an adjunct faculty member in the School of Business & Leadership at the University of Charleston and the Master's in Community College Leadership Program at Morgan State University. Mordecai currently resides in San Antonio, Texas with his wife of 13 years, Daphne Machelles, their son, Mordecai Jr., and daughter, Lauren Machelles.



Thank you to our New Orleans Local Arrangements Chair



Sonya Carr has been a member of SERA since her days as a doctoral student and has served the organization in various roles, including three terms as a Member-at-Large on the SERA Executive Council, co-developer of the Early Career Faculty Mentoring Initiative, Division V Chair, and Local Arrangements Chair for six Annual Meetings in New Orleans. As Local Arrangements Chair, she negotiates the annual meeting contract, and coordinates with hotel staff and key members of the SERA Executive Council, to ensure that organizational needs are met as to the room block, meeting room space, and catered functions. Sonya received the SERA Extended Service Award in 2010 and the John J. Hedl, Jr. Lifetime Service Award in 2018. She looks forward to welcoming SERA members to the 45th Annual Meeting in 2022 and encourages everyone to participate in the many professional opportunities available while enjoying the outstanding cuisine, music, art, and culture of New Orleans.

Looking for Volunteer Opportunities through SERA?

A great way to get involved in SERA is to volunteer. Some opportunities include serving as a proposal reviewer, division co-chair, or assisting with technology needs and services. Another great opportunity is to help with conference registration. Volunteers will welcome participants and provide various conference materials. Anyone interested in serving as a registration desk volunteer should contact Forrest Lane at forrest.lane@shsu.edu or by phone at (936)294-4287.

Welcome to Our Interim Board Member

Emma P. Bullock is an Assistant Professor in the Mathematics and Statistics Department at Sam Houston State University. Before joining SHSU, she served in public schools as a teacher and principal for 13 years. In that time, she taught mathematics, science, and music in grades 6-12 and served as a principal for 5 years. Her research interests include the intersection of school leadership and student mathematics achievement, and how the virtual manipulatives in digital math games help or hinder student learning,



2019–2020 Graduate Student Council

Dana van de Walker

Sam Houston State University



Noah Padgett

Baylor University



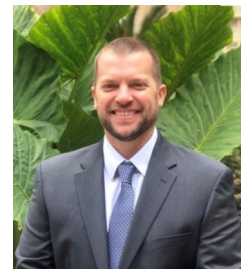
Michael Rugh

Texas A&M University



Eric Holton

Stephen F. Austin University



Emily Ann Brown

University of North Texas



Myra Alvarado

*Texas A&M University—
Corpus Christi*



Rebecca Delozier

Texas Tech University





*Electronic ballots
coming to your
inbox soon!*

2019 SERA Election Ballot

People who were members prior to August 2019 are eligible to vote in the SERA 2019 election and will receive an electronic ballot. If you experience any difficulty accessing your ballot or have any questions concerning the election, please contact Linda Zientek at lrzientek@shsu.edu and Susan Troncoso-Skidmore at skidmore@shsu.edu.

Please take the time to cast your vote. Each vote represents a valued choice and provides you an opportunity to have your voice heard. **Polls will open on October 16th and close at 11:59 p.m., U.S. central daylight time on November 1st.**

Candidates Selected for the Ballot

Position	Candidate	Institution
Program-Chair/ President-elect	Celia Wilson	Texas Wesleyan University
Member-at-Large	Faye Bruun	Texas A&M University—Corpus Christi
Member-at-Large	Lynn Burlbaw	Texas A&M University
Member-at-Large	Emma Bullock	Sam Houston State University
Member-at-Large	Chrissy Cross	Stephen F. Austin State University
Member-at-Large	Aubrey Meador	West Texas A&M University

About the HARE Electoral System

SERA elections use the Hare system. This system reallocates votes in races with more than 2 candidates until each position obtains a majority of the votes cast. Sometimes this system is also called the "Instant Run-off Voting System." For example, if 3 candidates were running for one office, and the first round rankings were:

Geri	Sue	Bob	Voter		Geri	Sue	Bob	Voter
3	1	2	"A"	<p>Because no candidate received 5 or more of the 9 first place votes, Voters "A's", "B's", "D's", and "I's" ranks for the last-place candidate, Sue, would be reallocated to the remaining candidates, and Sue would be eliminated as a candidate, as follows:</p> <p>At this point, Bob has a majority of the 9 votes, and would be elected, even though Geri had more first place votes than Bob in the initial round of vote counting.</p>	(2)		(1)	"A"
3	1	2	"B"		(2)		(1)	"B"
1	3	2	"C"		1		2	"C"
3	2	1	"D"		(2)		1	"D"
1	3	2	"E"		1		2	"E"
2	3	1	"F"		2		1	"F"
1	3	2	"G"		1		2	"G"
1	3	2	"H"		1		2	"H"
3	2	1	"I"		(2)		1	"I"
4	2	3	First place votes		4		5	First place votes

**Join us at the Hilton Hotel
Arlington, TX
February 12-14, 2020**

Important Dates:

- | | |
|--|----------------|
| • Conference Registration Deadline (pay by check) | 10/05/2019 |
| • Conference Registration Deadline (pay by PayPal) | 10/12/2019 |
| • 2019 Election Ballot Opens | 10/16/2019 |
| • 2019 Election Ballot Closes | 11/01/2019 |
| • Proposal Disposition Decisions sent to 1st Authors | Early November |
| • SERA Bruce Thompson Outstanding Paper Award Submission | 11/15/2019 |
| • DRAFT of Conference Program Available | Early December |
| • Graduate Student Paper Award Submission | 1/8/2020 |
| • Dean's Award Submission | 1/8/2020 |



Photo courtesy of Arlington Convention & Visitors Bureau