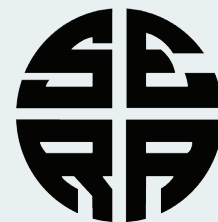


# SERA Newsletter

Southwest Educational Research Association  
[www.sera-edresearch.org](http://www.sera-edresearch.org)

Editor: Susan Troncoso Skidmore, Sam Houston State University



SPRING 2011



## THE PRES SAYS...

The 34<sup>th</sup> SERA Conference in San Antonio was highly successful. Even though some presenters were not able to make the conference due to the weather and icy conditions, those who did attend enjoyed an exceptional educational opportunity. This was the largest SERA Conference ever, with over 460 presenters and 321 sessions. Whereas some conferences around the country experienced a reduction in attendance this past year, SERA is thriving. This is a strong testimonial to how our members value SERA.

On behalf of SERA, I would like to give special thanks to our Past-President, **Linda Zientek**. As a direct result of her excellent leadership, SERA continues to grow and is a very healthy organization. Her knowledge of SERA procedures and her willingness to help all members get the most out of our organization are particularly noteworthy. I especially appreciated her guidance and help on the conference program.

The 2011 SERA Program Division Chairs/Co-Chairs were instrumental in developing the conference program and deserve special recognition. Their tasks included managing their division proposals, sending proposals out for peer review, writing acceptance letters, forwarding reviewer comments and serving as primary points of contact. These chairs had a large responsibility this year, as a record number of proposals were submitted. Division chairs were **Don Allen, Sonya Carr, Aileen Curtin, Tommy DeVaney, LaVonne Fedynich, Angela Gibson, Dianne Goldsby, Sandra Harris, Jason King, Cynthia Martinez-Garcia, Sandra Richardson, and Martha Tapia**. Thank you to our division chairs and their paper reviewers!

I was very pleased that there were 71 Division VI papers, for work-in-progress by graduate students. This shows strong support by our doctoral program directors, our graduate student representatives, and our graduate students. I would also like to thank the 19 discussants, who shared their research expertise with these graduate students during Division VI sessions at SERA. Discussants included **Sandra Acosta, Julia Ballenger, Kimberly Bilica, Mary Margaret Capraro, Aileen Cur-**

**tin, Stacey Edmonson, Robert Elliott, Karen Embry-Jenlink, Angela Gibson, Jim Hardy, Sandra Harris, Patrick Jenlink, Cynthia Martinez-Garcia, Barbara Polnick, Rebecca Robles-Pina, Pauline Sampson, Susan Troncoso Skidmore, Martha Tapia, and Ken Young.**

This year, we had a new proposal submission system created and managed by **Linda Zientek** and **Bruce Thompson**. They worked closely with our membership chair **Vince Paredes**, which resulted in a seamless processing of proposals and registration this year. Thank you Vince for serving as the SERA membership chair.

It takes many dedicated people who contribute their part for a conference to be successful. These behind-the-scenes volunteers also deserve a big thank you for their service. Thank you to **Winona Burt** who effectively planned and managed the audiovisual support, **Gilbert Naizer** and **Jim Telese** who helped set up and tear down equipment for the sessions, **Elsa Ruiz** and **Sonya Carr** who helped manage the registration desk, and **Shirley Matteson** who ensured that photos were taken of presenters during the conference. Shirley tirelessly filled in for graduate student photographers who were unable to attend the conference due to the weather. **Susan Troncoso Skidmore** ensured that technology needs were met during the conference, and **Mary Margaret Capraro**, the official "SERA Trinket Maven," procured the giveaways and gifts for conference attendees.

As SERA continues to grow, it is rewarding to recognize the exceptional service of so many dedicated volunteers. I hope that all of you will continue to serve SERA, and that new SERA members will also volunteer to be an active part of our organization. Thank you to all for a great conference.

The 35<sup>th</sup> annual conference will be held on **February 1-4, 2012**, in New Orleans. Planning is underway, and information on the conference and on submitting proposals is provided later in this newsletter. I hope to see you all in New Orleans! Bring a colleague or two!

**William A. Jasper**

*President*

*Sam Houston State University*

[News from Past President](#) 2

[Thoughts from The Executive Director](#) 2

[Outstanding Paper Co-Winners](#) 3

[Board Members & Terms](#) 4

[Meet the Board](#) 5

[Program News](#) 6

[Hotel Information](#) 6

[Conference Training Sessions](#) 7

[Presidential Invited Speaker](#) 7

[Conference Training Sessions](#) 8

[A Preview of New Orleans](#) 9

[Outstanding Graduate Student Paper](#) 10

[Hotel Winners](#) 10

[Past Graduate Student Report](#) 11

[Graduate Student Council](#) 12

[Graduate Student News](#) 13

[Let's Not Forget](#) 14

[Call for Proposals](#) 15

## NEWS FROM PAST PRESIDENT...



The ice and snow were not able to stop the 2011 SERA Conference. The conference was a success with a record number of proposals and authors. We hope that you enjoyed the SERA experience and the opportunity to meet with colleagues and friends. I would like to sincerely thank

all of the attendees, participants, reviewers, and workshop presenters who traveled to the conference, be it by car, plane or train. Many spent long hours at airports and even Amtrack train stations.

The success of the conference is due to a number of people who worked behind the scenes planning and organizing the conference. A special thank you to the Program Chair and current President **Bill Jasper**. Special thanks also to the local arrangement chair **Kathleen Mittag**, who is the person who negotiates the hotel accommodations. And thanks to the SERA Executive Director **Bruce Thompson**, who ensures the conference runs smoothly; to Maria Benzon for her leadership of the graduate student activities and awards; to **Vince Paredes** who is in charge of membership; and to the reviewers of the graduate outstanding paper. Thank you to **Mary Margaret Capraro** (AKA "The SERA Trinket Maven") who is responsible for making sure we have conference tokens to take home such as the conference bags and pencils.

Professor **James ("Jim") McLean** shared his expertise and wisdom and the attendees were very thankful for the informa-

tion he provided. The graduate students enjoyed the opportunity to meet with Dr. McLean in an informal setting at the graduate student fireside chat. We were very proud to offer two



conference training sessions this year. Professor **Deborah Simmons** and **Peggy McCardle** educated our members on a better understanding of the fundamentals of submitting a research grant. **Bruce Thompson** educated our members on multivari-

ate statistics.

We look forward to seeing you at the 2012 SERA Conference in New Orleans. The Executive Board is now planning the 2012 SERA Conference. Local arrangement chair **Sonya Carr** has been working with the [Hotel Monteleone](#) on room accommodations. **Kim Nimon** will soon begin fulfilling her role as Program Chair/President-Elect.

**Linda Reichwein Zientek**

*Past President*

*Sam Houston State University*

## SOME THOUGHTS ABOUT THE 34TH AND THE 35TH SERA ANNUAL MEETINGS



Everybody I talked to in San Antonio was completely excited about our upcoming 2012 meeting in New Orleans. People love the experience of New Orleans (including the food!), and because we always have a great turnout there, the meeting there is also very strong academically.

For the 2012 meeting, **Yvonna Lincoln** will do a reprise of her one day training session on [Qualitative Methods](#) which she did 4 years ago in New Orleans. That session was hugely popular, and we strongly encourage interested members to register early once the Registration website is up in October to be assured of a seat at this training session. **Kim Nimon** and **Kyle Roberts** will be conducting a Friday 4 hour training session on the quantitative software

called "[R](#)." And **Robin Henson**, **Tony Onwuegbuzie** and **Bruce Thompson** will launch the 35th annual meeting with a training session on "[How to Publish](#)." Each of these is described elsewhere in this Newsletter.

Of course, the trainers at the recent 34th annual meeting also did a great job. Special thanks to **Deb Simmons** and **Peggy McCardle** for conducting a great training session on grant writing!

The [Presidential Invited Speaker](#) at the 35th SERA annual meeting will be **Patricia Alexander**, University of Maryland, who is a dynamic, exciting speaker with a lot to offer, as noted in more detail elsewhere in the Newsletter. Pat is a Past President of SERA, and we're delighted to have the opportunity to bring her back into our midst for our 35th anniversary!

**Bruce Thompson**

*SERA Executive Director*

*Texas A&M University*



*Even though there  
was an ice storm,  
SERA members trav-  
eled by planes, trains,  
and automobiles to  
attend the annual  
meeting!*



## 2011 OUTSTANDING PAPER CO-WINNERS

Co-winners were declared for the first time in SERA history because judges' rankings were exactly tied. Both author teams will receive an honorarium of \$750, and be noted on the SERA website, and in all future SERA conference programs. Both papers will also be presented at AERA in a session featuring Outstanding Paper Awards of the State and Regional Research Associations.

**Anthony J. Onwuegbuzie**, Sam Houston State University, **Rebecca K. Frels**, Lamar University, **Nancy L. Leech**, University of Colorado at Denver, and **Kathleen M.T. Collins**, University of Arkansas at Fayetteville, for *A Mixed Research Study of Approaches Used by Mixed Research Instructors*

Resources are available to guide researchers/students in formulating, planning, and implementing mixed research studies.



**Celia M. Wilson**, Texas Wesleyan University, for *Attenuation of the Squared Canonical Correlation Coefficient Under Varying Estimates of Score Reliability*

The purpose of this study was to compare the degree of attenuation of the squared canonical correlation coefficient under varying estimates of score reliability. The results from this

Monte Carlo investigation illustrated the importance of score reliability when interpreting study results. Specifically, the more measurement error (lower reliability) present in the variables included in an analysis, the more attenuation experienced by the effect size(s) produced in the analysis, in this case  $R_c^2$ . These results also showed the role between and within set correlation, variable set size and sample size played in the attenuation levels of the squared canonical correlation coefficient.



However, with few exceptions, there is little explicit guidance on how to teach mixed research. To address this limitation, the present investigation examined the perspectives of 14 instructors of mixed research courses from U.S. institutions, and compared and contrasted these perspectives by utilizing mixed research techniques. Data collected consisted of interviews, focus groups, video of teaching, and syllabi. A sequential mixed analysis resulted in a three-dimensional model illustrative of the instructors' pedagogical styles. By identifying course exemplars, this study provides a foundation for mixed research instructors.

## CONFERENCE HIGHLIGHTS



James E. (Jim) McLean,  
University of Alabama



Jim McLean's Presidential Invited Address



Bruce Thompson,  
Multivariate Statistics Training



Peggy McCardle,  
Grant Writing Training



Deborah C. Simmons,  
Grant Writing Training



Fireside Chat

## BOARD MEMBERS, APPOINTMENTS AND TERMS

### ***President:***

Bill Jasper, Sam Houston State University

### ***President-Elect/Program Chair:***

Kim Nimon, University of North Texas

### ***Past-President:***

Linda Zientek, Sam Houston State University

### ***Secretary: 2011-2013***

Susan Troncoso Skidmore, Sam Houston State University

### ***Treasurer:***

Kathleen Mittag, University of Texas—San Antonio

### ***Historian:***

John J. Hedl

### ***Membership Chair:***

Vince Paredes

### ***Graduate Student Advisor:***

Susan Troncoso Skidmore, Sam Houston State University

### ***Graduate Student Representative:***

Sandra Nite, Texas A&M University

### ***Members-at-Large: 2009-2012***

Sonya Carr

Shirley Matteson, Texas Tech University

Elsa Ruiz, University of Texas—San Antonio

### ***Members-at-Large: 2010- 2013***

Jim Telese, University of Texas—Brownsville

Julia Ballenger, Stephen F. Austin State University

Ellen "Aileen" Curtin, Texas Wesleyan University

### ***Members-at-Large: 2011-2014***

Winona Burt, University of Houston—Clear Lake

Bettye Grigsby, University of Houston—Clear Lake

Prathiba Natesan, University of North Texas

### ***Executive Director:***

Bruce Thompson, Texas A&M University



## MEET THE BOARD

**Dr. Ellen "Aileen" Curtin** earned a bachelor's degree from National University of Ireland in 1983. She was a Gaelic language immersion teacher for the Department of education in Ireland from 1983-1989. In 1989, through a lottery system, she was selected to come to United States as a legal immigrant. She settled in Kansas City and worked as an elementary teacher for the Kansas City Kansas schools. In 1993 she relocated to Texas and taught elementary school for H-E-B ISD until 2000. In 2000 she joined the faculty in school of education at Texas Wesleyan University in Fort Worth. She earned her master's degree from Texas Wesleyan University in 1996 and her PhD from University of North Texas in 2002. She has worked with pre-service teachers in the area of early childhood education, multicultural education, and ESL. She currently teaches in the graduate and doctoral degree programs and is the director of the Doctor of Education program at Texas Wesleyan University. She is completing her 28th year in education.



She presents annually at many conferences both nationally and internationally and researches specifically in the area of ESL and second language acquisition, and minority language preservation. She has published many articles and is the author of "Practical strategies for teaching English language learners" published by Pearson Education in 2009. Dr. Curtin's other area of research and interest is in the area of Gaelic Language teaching and preservation here in the United States. She developed and taught undergraduate level courses in Gaelic language for the University of Saint Thomas's minor in Irish studies in Houston in 2008. She continues to work as a consultant in the area of Gaelic language teaching and preservation in the United States and Canada.

**Bettye Grigsby** received her undergraduate education in Biology and administrator certification at Lamar University in Beaumont, Texas. She acquired a Master of Education in Counseling at Prairie View A&M in Prairie View, Texas. Her doctorate was obtained in Curriculum and Instruction at Texas A&M University in College Station, Texas.



Dr. Grigsby has been a public school classroom teacher and served as an administrator on the secondary level for more than 18 years. Currently, she is an Assistant Professor at the University of Houston – Clear Lake in the area of Educational Administration and an Educational Consultant for Pre-K-12 schools.

Dr. Grigsby has worked with school districts providing professional development to support them in improving instruction for all students. She has presented at national conferences on issues related to educational administration and principal preparation programs. Her publications include areas concerning leadership mentoring and roles and responsibilities of administrators as curriculum leaders.

**Prathiba Natesan** is Assistant Professor of Educational Psychology at the University of North Texas. Her specializations include research, measurement, and statistics, specifically Bayesian applications of item response models. Her works have been published in top-tier journals such as *Educational and Psychological Measurement*. She has been an active member of SERA and AERA since 2004 and her paper won the "SERA - Outstanding Research Paper Award" in 2009. Another notable achievement includes the doctoral "dissertation of the year award" from Texas A&M in 2008.

As a graduate student, Prathiba was the president of the graduate students' association at Texas A&M. She also spearheaded a quantitative interest group, SIGQUAN, which provided research consultation to graduate students at Texas A&M. She has worked as Visiting Assistant Professor at the University of Miami and Florida International University. She also serves as the director of the Center for Interdisciplinary Research and Analysis (CIRA) at UNT.



**Sandra Nite** teaches in the Mathematics Department at Texas A&M University. In addition to her teaching responsibilities, she is the Associate Director of the Center for Technology-Mediated Learning in Mathematics, K-12 and the Director of the AP Summer Institutes in Mathematics. Her work is primarily focused on coursework and professional development for preservice and inservice in mathematics teaching through Teacher Quality Grants and Mathematics Instructional Coaching. She is involved in work through an NSF grant to increase success and retention in engineering calculus courses and plans to focus on related topics for her dissertation. Before taking her current position at Texas A&M University, she taught 15 years in high school mathematics and science, co-authored a mathematics textbook, and served as Mathematics Curriculum Coordinator. She also taught 5 years full-time and 18 years adjunct in mathematics and music at Brazosport College. In her free time, she enjoys practicing piano, canning, sewing, and playing various games.



# PROGRAM NEWS: JOIN US FOR SERA 2012 IN NEW ORLEANS

The SERA Executive Board hopes to see you in New Orleans for another great conference! The 35<sup>th</sup> Annual SERA conference will be held from Wednesday, February 1, 2012 until Saturday, February 4, 2012. We are honored to have Profes-



sor **Patricia A. Alexander** as our Presidential Speaker for SERA 2012.

At the start and towards the end of our conference, we have planned exceptional training sessions. These are great opportunities to enhance our knowledge from ex-

perts in the field of educational research. On Wednesday afternoon, **Robin K. Henson**, **Anthony Onwuegbuzie**, and **Bruce Thompson** will conduct a training session focusing on "How to Publish". On Friday, **Kim Nimon** and **Kyle R. Roberts** will host an introductory workshop for those who are interested in "Using R for Educational Research". Starting Friday afternoon and continuing through Saturday morning, **Yvonna Lincoln** will present "A Primer on Qualitative Research Methods".

We are very pleased to announce that our conference hotel will be the Hotel Monteleone. Many thanks to **Sonya Carr**, our local arrangements chair for this conference, for making this happen. As local arrangements chair, she is the person who acquires our excellent hotel rates and accommodations and who handles all of the challenges (and sometimes even nightmares!) that are encountered with planning such a large meeting.

The 2012 Call for Proposals is included later in this newsletter, and has also been posted on the SERA website. Each of you is encouraged to submit a proposal and to present at the 2012 conference in New Orleans. This is an excellent opportunity to share research ideas and to learn from the research of other educators. By attending the conference, you have a chance to nurture existing collaborations with colleagues within our field, as well as to develop future collaborations.

We look forward to seeing you in New Orleans for SERA 2012!

**Kim Nimon**

*SERA 2012 Program Chair/President-Elect*

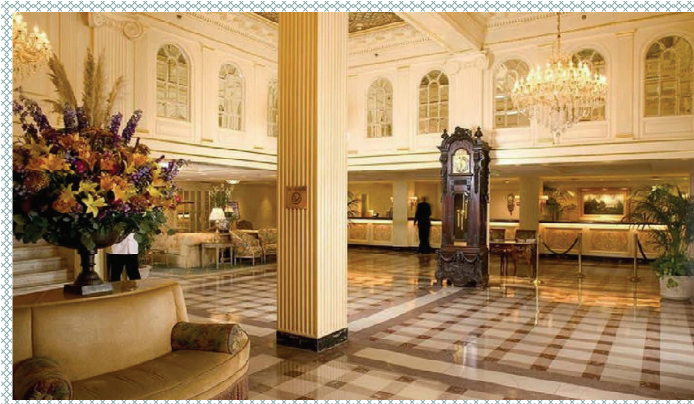
*University of North Texas*



## IMPORTANT DATES TO REMEMBER

- **SERA Proposal System Opens: APPROXIMATELY AUGUST 15th**
- **SERA Proposal System Closes: September 15, 2011**
- **Dean's Award and Graduate Student Outstanding Paper Due: January 11, 2012**
- **Graduate Student Papers Due to Discussants: January 20, 2012**
- **Outstanding SERA Paper Due: February 2, 2012**
- **SERA 2012: February 1-4, 2012**

## HOTEL INFORMATION



SERA 2012 will be held at the historic Hotel Monteleone. Located in the heart of the French Quarter and at the foot of Royal Street, the Hotel Monteleone is just steps away from streets that lead to Jackson Square, the Old French Market, and the River Walk. After a day of attending sessions at the conference, you can walk less than 160 yards to Bourbon Street for food, entertainment, and drinks. Be advised that staying at the Hotel Monteleone may not be for the faint-hearted. The Hotel Monteleone is known for being one of the premier haunted hotels in North America!

# WEDNESDAY: TRAINING SESSION

## THE "HOW TO PUBLISH" TRAINING SESSION ON WEDNESDAY AFTERNOON AT THE 35th SERA MEETING

The "How to Publish" training workshop will be held in the early afternoon on the Wednesday that the 35th annual SERA meeting begins. The workshop has a \$30 ticket price, and seats are limited. As the following biographies suggest, the three trainers are well qualified to address this training topic.



**Robin K. Henson** is Professor of Education at the University of North Texas. Dr. Henson served as Associate Editor of *Educational and Psychological Measurement*. Dr. Henson is widely published, and has previously served as a member of the

SERA Board.

**Anthony Onwuegbuzie** is Professor in the Department of Educational Leadership and Counseling at Sam Houston State University. He teaches courses in qualitative, quantitative, and mixed-methods re-



search, and writes extensively on topics related to all three areas. Dr. Onwuegbuzie has secured more than 200 refereed journal articles and book chapters, and has made approximately 400 presentations and keynote addresses at regional, national, and international conferences and venues. He served as an Editor of *Educational Researcher* and is a Co-editor of *Research in the Schools*.

**Bruce Thompson** is Distinguished Professor, Texas A&M University. He served as a Co-editor of the teaching, learning, and human development section of the *American Educational Research Journal (AERJ:TLHD)*, and past editor of *Educational and Psychological Measurement*, the series, *Advances in Social Science Methodology*, and two other journals. He is the author/editor of roughly 210 articles, and several books, including the recently published *Foundations of Behavioral Statistics*, and *Exploratory and Confirmatory Factor Analysis*.



## 2012 SERA PRESIDENTIAL INVITED SPEAKER



The 2012 SERA Presidential Invited Address Speaker is **Patricia A. Alexander**. Her topic is "Things I Have Learned (So Far)." Dr. Patricia Alexander is the Jean Mullan Professor of Literacy and Distinguished Scholar-Teacher in the Department of Human Development at the University of Maryland. She has served as President of Division 15 (Educational Psychology) of the American Psychological Association, Vice-President of Division C (Learning and Instruction) of the American Educational Research Association, and Past-President of the Southwest Educational Research Association. A former middle-school teacher, Dr. Alexander received her reading specialist degree from James Madison University (1979) and her Ph.D. in reading from the University of Maryland (1981). Since receiving her Ph.D., Dr. Alexander has published over 230 articles, books, or chapters in the area of learning and instruction. She has also presented over 300 papers or invited addresses at national and international conferences. She currently serves as the senior editor of *Contemporary Educational Psychology*, was past editor of *Instructional Science* and Associate Editor of *American Educational Research Journal-Teaching, Learning, and Human Development*, and presently serves on over 10 editorial boards including those for *Journal of Literacy Research*, *Educational Psychologist*, and the *Journal of Educational Psychology*.

Among her many honors and awards, Dr. Alexander is a Fellow of the American Psychological Association and the American Educational Research Association, and was a Spencer Fellow of the National Academy of Education. She was recently named the second most productive scholar in Educational Psychology, and was the 2001 recipient of the Oscar S. Causey Award for outstanding contributions to literacy research from the National Reading Conference. She is also the 2006 recipient of the E. L. Thorndike Award for Career Achievement in Educational Psychology from APA Division 15 and the 2007 recipient of the Sylvia Scribner Award from AERA Division C. In addition, she has received various national, university, and college awards for teaching.



# Friday: Using R for educational research: An introductory workshop to break the learning curve

R is a **FREE** statistical programming language and environment that supports Unix, Windows, and Mac families of operating systems. R can be used to (a) teach statistical concepts, (b) perform statistical analyses, and (c) perform Monte Carlo simulation research. R not only does statistical analyses, but also has powerful graphical capabilities.



This workshop is aimed at helping individuals fast track their way through the R learning curve and does not presuppose any familiarity with R or programming. Participants will learn how to install R, use built-in help features, and ask questions the smart way when posting to the R help list serve. In addition,

participants will learn how to read in data, analyze data, and create graphs that are sure to wow sophisticated audiences. As time permits, inferential statistics across the general linear model will be demonstrated including ANOVA, Multiple Linear Regression, MANOVA, Canonical Correlation, and Hierarchical Linear Modeling.

*Participants are encouraged to bring laptops. All registered work*

*shop participants will receive wireless connectivity as part of the workshop fee.*

This four-hour workshop will be held on Friday at the 35<sup>th</sup> annual SERA meeting. The workshop has a \$15 ticket price, and seats are limited. The workshop will be facilitated by **Kim Niemon** and **Kyle Roberts**. Kim is an Assistant Professor at the University of North Texas and uses R to teach statistical concepts, analyze large datasets from the U.S. Army and Air Force, and conduct Monte Carlo studies. Kyle is an Associate Professor at Southern Methodist University and uses R to teach a complete sequence of statistical courses and analyze large datasets from school districts across the United States. Their work on R has been published in publications such as *Behavior Research Methods*, *Journal of Applied Measurement*, *Multivariate Behavioral Research*, and *Research Methodologies for Conducting Research on Giftedness*. They are also authors of the *yhat* package (available from the Comprehensive R Archive Network) that provides software to fully interpret regression and canonical effects.



## SATURDAY: QUALITATIVE METHODS

**Yvonna S. Lincoln** is a Texas A&M University Distinguished Professor of Higher Education and Educational Administration and holder of the Ruth Harrington Chair. She is author, coauthor, or editor of books such as *Naturalistic Inquiry* and *Fourth Generation Evaluation* (both with Egon G. Guba), and *Organizational Theory and Inquiry*. She served as the Vice President of Division J (Postsecondary Education) of the American Educational Research Association and as the president of the American Evaluation Association. Dr. Lincoln co-edited, with Dr. Norman Denzin, the various editions of the *Handbook of Qualitative Research*. She is the Co-Editor of *Qualitative Inquiry* and has been Co-Editor also of the *American Educational Research Journal: Teaching, Learning and Human Development*.



### Leadership Legacy: SERA's Past Presidents

(F) Vince Paredes, Robert Capraro, Nancy Martin, Kathleen Mittag, Dianne Taylor

(B) Gil Naizer, Linda Zientek, Mary Margaret Capraro, Bruce Thompson, John Hedl, Kyle Roberts



# *A Preview of New Orleans for the 2012 SERA Annual Meeting*



We are looking forward to the 2012 SERA Annual Meeting at the Hotel Monteleone. In addition to encouraging you to participate in the many professional opportunities available, we want to urge you to take advantage of all that the city has to offer! The joy for living that you find in much

of the South is very evident in New Orleans. You'll experience this joy in our food and our music, and in the people you meet.

In the French Quarter you will find great shops, restaurants, historic homes, and museums. You should consider a visit to the Historic New Orleans Collection on Royal St. (free), the 1850 House, and the wonderful exhibits at the Cabildo and the Presbytere (both part of the Louisiana State Museum Complex). Often on week-ends you can find free live music performances at the New Orleans Jazz National Historic Park or the Louisiana Music Factory. You can also easily walk to Snug Harbor, the House of Blues, and other music clubs.

Other ideas? Relax in the courtyard of the historic Napoleon House, take a carriage ride through the French Quarter, or go on a Haunted History walking tour. A short walk or streetcar ride away you can visit the Audubon Insectarium, Southern Food & Beverage Museum (SoFAB) in the Riverwalk, Aquarium of the Americas, Ogden Museum of Southern Art, National

World War II Museum, Blaine Kern's Mardi Gras World, and the world-class Audubon Zoo.

Shops and boutiques—from the French Quarter to Magazine Street—offer an array of retail choices. Options include The Shops at Canal Place, Saks Fifth Avenue, The Riverwalk, Jax Brewery, as well as hundreds of boutiques, art galleries and antique stores throughout the city.

## **What do others say?**

- § Travel + Leisure ranked New Orleans #7 on their Top U.S. Cities List for 2010.
- § The Zagat Survey organization named New Orleans "The Most Affordable Dining City in the Country".
- § AOL Travel named New Orleans as a Top Budget Destination for 2011.
- § Bing named New Orleans one of the Coolest Cities in North America. (Source: the New Orleans Convention and Visitors Bureau website)

New Orleans is a special city and we anticipate great things in 2012. **The Hotel Monteleone**, our historic conference hotel, was founded in 1887 and will be celebrating 125 years of hospitality in the French Quarter (<http://hotelmonteleone.com/>)

We invite you to explore! You can find more information by visiting the New Orleans Convention and Visitors Bureau website: <http://www.neworleanscvb.com/>

**Sonya**

*SERA Member-At-Large and 2012 Local Arrangements Chair*



## *By day or by night....*



## *Laissez les bons temps rouler!*

*Photos courtesy New Orleans Convention and Visitors Bureau.*

## 2011 OUTSTANDING GRADUATE STUDENT PAPER

Congratulations to **Kar-Man (“Ida”) Lee**, a graduate student from the University of Houston, who won the Outstanding Graduate Student Paper Award for her paper entitled, *Contribution of Orthographic Knowledge beyond Phonological Awareness to Chinese EFL Students' Reading Outcomes*. Kar-Man will receive \$500.



A total of 132 Chinese students learning English as a foreign language (EFL) participated in this study. Its goal was to examine whether orthographic knowledge provided distinctive contribution to word reading and reading comprehension, beyond and above phonological awareness. It was affirmed that orthographic knowledge was a better predictor of word reading than phonological awareness and, to an even greater extent, also of reading comprehension. Most importantly, even after the effects of phonological awareness had been ruled out, it still accounted for the variance (though to varying degrees) in the two reading outcomes.

### *Why are these people smiling?*



*As winners of the hotel drawing held during the annual SERA Luncheon, the students pictured above won a FREE night at the Menger Hotel!!*



### *SERA Luncheon*



# PAST GRADUATE STUDENT REPRESENTATIVE REPORT



Being the SERA Graduate Student Representative to the SERA Executive Council and leader of the Graduate Student Council (GSC) has been an amazing opportunity to get to know many graduate students and faculty and to be a part of your SERA 2011 experience! I would like to acknowledge the GSC members who were instru-

mental in making this year's SERA fabulous! They worked tirelessly to promote SERA on their respective campuses, encouraged students to submit paper presentations for the Dean's Awards, evaluated papers to award students, took pictures, coordinated and supported graduate student events, and assisted as needed during the conference. I hope all graduate students were able to present their research, receive feedback from discussants and participants, and network with colleagues at other colleges and universities. In addition to the paper presentation sessions, graduate students also participated in a personal fireside chat with Dr. Jim McLean as well as a variety of workshops and trainings. On behalf of graduate students and the GSC, I would like to thank the SERA Board for their efforts in providing important and practical trainings such as grant writing and multivariate statistics!

## SERA 2011-2012 Graduate Student Representative

At the graduate student meeting, students also had the opportunity to elect the NEW Graduate Student Representative (GSR) to the SERA Executive Council. This year there were two candidates from

among the graduate council members who were eager to serve as your new GSR. Sandra Nite from Texas A&M University was selected as your 2011-2012 GSR. Congratulations Sandra! Sandra is full of great ideas to make SERA a wonderful experience for graduate students. This year she organized a social event for the TAMU participants and I know that she, together with the enthusiastic new GSC members, are already planning more opportunities to network with professors and students with similar interests as well more social events for SERA 2012 in New Orleans.

One responsibility of the GSR is to coordinate the Dean's Award for graduate student papers. Each year the Deans from participating



universities support graduate student research at SERA by funding the Dean's Award. The papers are blindly reviewed by

GSC members. The winners are announced at the annual SERA luncheon. This year, from the 31 total submissions, there were eleven graduate student winners from seven participating universities. Congratulations to all awardees for being recognized by your peers!

## Maria B. Benzon

*Graduate Student Representative, SERA 2010-2011*

*Doctoral Student, Educational Psychology, University of Houston*

## CONGRATULATIONS DEAN'S AWARD WINNERS!



(Pictured above, L-R) **Judy Bolen** from University of North Texas; **Julie Barrett** from Sam Houston State University; **Jonathan Maxwell** from Texas A&M University; **Chyllis E. Scott** from Texas A&M University; **Ismahan Arslan-Ari** from Texas Tech University; **Fatih Ari** from Texas Tech University; **Kristin Craft** from Sam Houston State University

(Not pictured) **Shelly Rodriguez** from University of Texas; **Alyssa D. Kaye** from University of Texas; **Bobbie Koen** from University of Houston; **Kar-Man (Ida) Lee** from University of Houston; **JoAnn Colson** from Lamar University; **Valerie Petrzalka** from Lamar University; **Harvey Zuniga** from Lamar University; **Serena Johnson** from University of North Texas

## 2012 GRADUATE STUDENT COUNCIL

### **Sandra Nite**

Graduate Student Representative  
Texas A&M University  
College of Education & Human Development  
Department of Teaching, Learning, and Culture  
Curriculum & Instruction - Mathematics Education  
snite@math.tamu.edu



### **Daelynn Copeland**

Baylor University Rep  
Educational Psychology  
Learning and Cognition & Exceptionalities  
Daelynn\_copeland@baylor.edu



### **Patricia Curry**

Stephen F. Austin University  
College of Education  
Educational Leadership  
pcurry@clevelandisd.org



### **Carlton J. Fong**

The University of Texas at Austin  
College of Education  
Department of Educational Psychology  
carltonfong@mail.utexas.edu

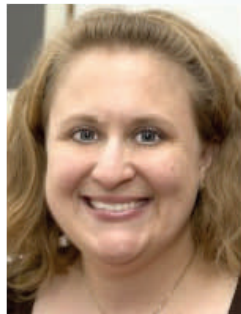
### **Donna Fong**

Lamar University Rep  
Educational Leadership  
dfong@lcmcisd.org



### **Helen Jackson**

Sam Houston State University Rep  
Higher Education  
Educational Leadership  
hejoo3@shsu.edu



### **Kary Johnson**

Texas Wesleyan University Rep  
Department of Education  
Curriculum and Instruction  
aryajohnson@sbcglobal.net



### **Alime Sadikova**

Texas Tech University Rep  
College of Education  
Department of Educational Psychology and Leadership  
Educational Leadership  
Alime.sadikova@ttu.edu

### **Andrea Stehle**

Walden University At-Large Rep  
College of Education and Leadership  
Department of Education  
magistrastehle@yahoo.com



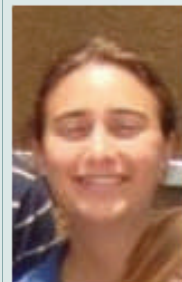
### **Dan Taylor**

University of Houston Rep  
College of Education  
Educational Psychology  
Educational Psychology and Individual Differences  
djtaylor@uh.edu



### **Heather Turner**

University of North Texas  
Educational Research  
Research, Management, and Statistics  
HeatherTurner2@my.unt.edu



### **Rayya Younges**

Texas A&M University Rep  
College of Education & Human Development  
Department of Teaching, Learning, and Culture  
Curriculum & Instruction - Mathematics Education  
rayya@tamu.edu



# GRADUATE STUDENT NEWS



In spite of the weather that put a damper on some of the planned social activities and prevented some presenters from attending, the SERA Conference in San Antonio was a wonderful experience for graduate students and faculty alike. For graduate students in particular, it is a great opportunity to see the work of other graduate students and of faculty in the Southwest Region. We

were able to meet and learn from other researchers interested in the same topics. I know of no other organization so dedicated to furthering graduate student research and writing, and I encourage all to spread the word on your campus about the unique experiences at SERA. With the assistance and input of graduate students, we can continue this great tradition that was begun by our professors and mentors.

Many thanks go to **Dr. Jim Hardy** of Lamar University, who has served as Graduate Student Advisor for several years, and to **Dr. Susan Skidmore**, who has been assisting him since her stint as Graduate Student Representative. Thanks also to **Maria Benzon**, Graduate Student Rep for her guidance and leadership and to the Graduate Student Council for recruiting fellow students to present and submit papers, reviewing proposals, reviewing papers for Dean's Awards, taking pictures of graduate students, and organizing events for their schools. Graduate student representatives for 2010-2011 were **Kristin Craft** (Sam Houston State University), **Ismahan Arslan-Ari** (Texas Tech University), **Harvey Zuniga** (Lamar University), **Carlton J. Fong** (University of Texas at Austin), **LaTonya Smith** (University of Houston), **Amber Elli-**

**son** (University of North Texas), **Cathy Amonetti** (Stephen F. Austin State University), and at-large representative **Andrea Stehle** (Walden University).

Next year SERA will once again take place in New Orleans. For those who have attended there, you know what a wonderful experience it will be. Besides the opportunities to network with researchers from other institutions and the wonderful training sessions that will be provided, there is delicious food to be found in New Orleans, from the famous beignets at Café Du Monde to the numerous seafood choices. Not to be overlooked is the fabulous opportunity to hear jazz at its best, on street corners, in various small venues, and for the more cultured jazz ear, Snug Harbor Jazz Bistro.

I look forward to serving as the Graduate Student Council Representative on the SERA Board and to working with our 2011-2012 representatives **Kary Johnson** (Texas Wesleyan University), **Alime Sadikova** (Texas Tech University), **Helen Jackson** (Sam Houston State University), **Donna Fong** (Lamar University), **Dan Taylor** (University of Houston), **Daelynn Copeland** (Baylor University), **Rayya Younes** (Texas A&M University), **Carlton Fong** (University of Texas at Austin), **Patricia Curry** (Stephen F. Austin University), **Heather Turner** (University of North Texas), and **Andrea Stehle** (Walden University, At-Large Representative). In particular, we welcome Kary and Daelynn because this is the first time Texas Wesleyan University and Baylor University have had their own Graduate Student Representatives.

## Sandra Nite

Graduate Student Representative

Texas A&M University



## Thanks to all the photographers!



Shirley Matteson, TTU

Sandra Acosta, TAMU  
Cathy Amonett, SFA  
Ismahan Arslan-An, TTU  
Julia Ballenger, SFSU  
Maria Benzon, UH  
Winona Burt, UH-CL

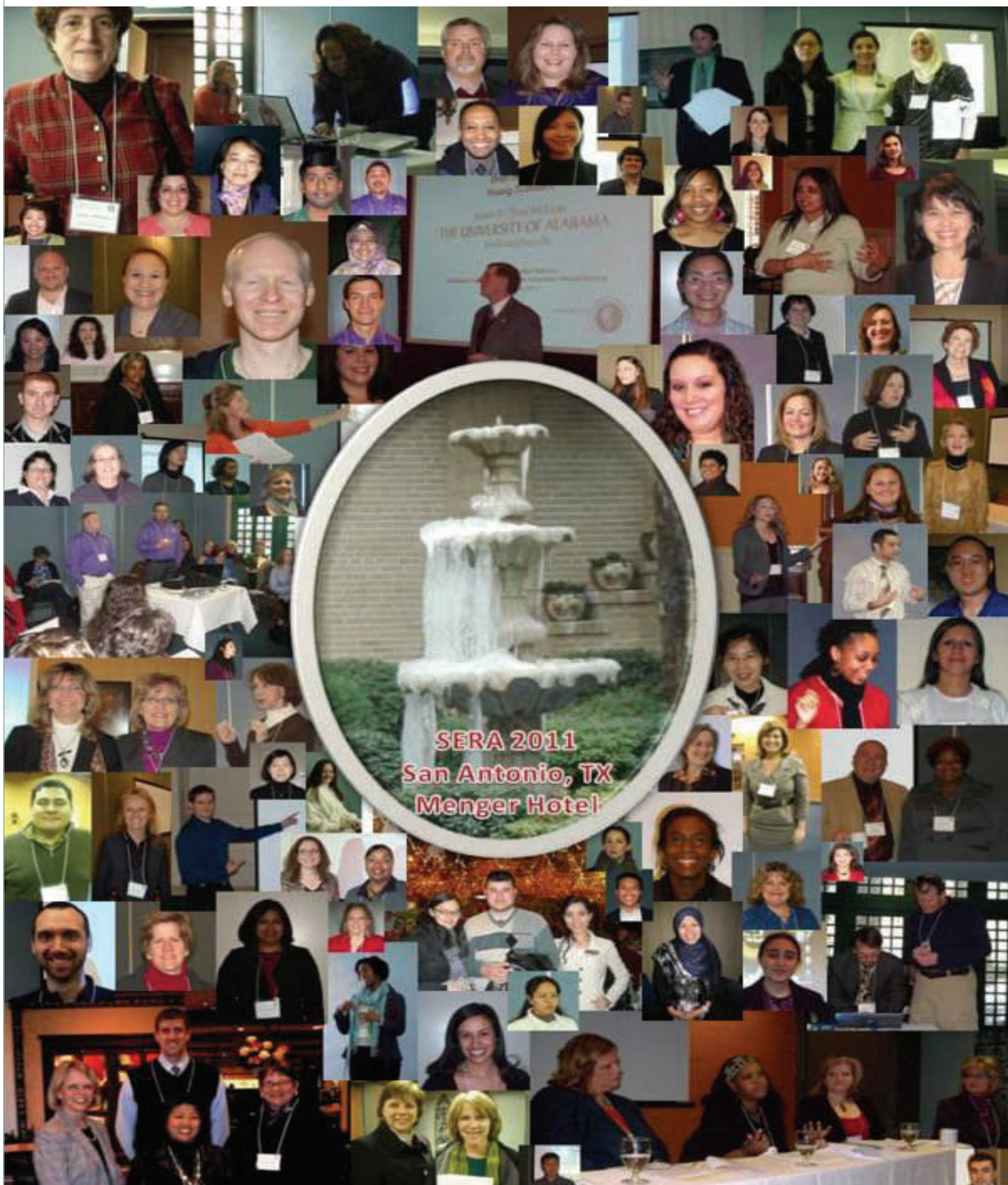
Mary Margaret Capraro, TAMU  
Sonya Carr  
Kristen Craft, SHSU  
Carlton Fong, UT  
Sarah Fuentes, TCU  
Angela Gibson, American

Public  
Sue Jackson, UH  
Suzanne Lindt, Midwestern  
Sandra Nite, TAMU  
Janet Ray, SHSU  
Mark Riha, SHSU  
Alime Sadikova, TTU

Andrea Stehle, Walden  
Dan Taylor, UH  
Wendy Turner, TAMU  
Fernando Valle, TTU  
Kanisha Wiley, SHSU  
Harvey Zuniga, Lamar



# LET'S NOT FORGET





***SOUTHWEST EDUCATIONAL RESEARCH ASSOCIATION***

**CALL FOR PROPOSALS FOR THE  
2012 ANNUAL MEETING  
FEBRUARY 1 - FEBRUARY 4, 2012  
THE HOTEL MONTELEONE  
NEW ORLEANS, LA**

**Program Chair:**

**Kim Nimon**

**University of North Texas**

**Learning Technologies Department**

**Denton, Texas 76207-7102**

**214-675-4872**

**kim.nimon@unt.edu**

**GENERAL INFORMATION**

The 35<sup>th</sup> Annual Meeting of the Southwest Educational Research Association will be held

**WEDNESDAY, FEBRUARY 1 THROUGH SATURDAY, FEBRUARY 4, 2012**

at the Hotel Monteleone • 214 Royal Street • New Orleans, LA 70130-2201 •

Tel: (504) 523-3341 • Fax: (504) 528-1019 • <http://hotelmonteleone.com>

**Directions to the Monteleone: From Mississippi, Alabama, etc.:** Head I-10 West toward Baton Rouge. Exit Orleans Ave./Vieux Carre (235A). Proceed down ramp and turn left at the light onto Orleans Ave. Continue on Orleans Ave under Interstate. Orleans Ave. becomes Basin Street. Continue on Orleans/Basin for .6 miles. Turn left on Conti Street. Continue six blocks (.5 miles), turn right on Decatur Street, then right on Bienville St. You will see the garage for Hotel Monteleone on your left side approximately 2 blocks down.

**From Airport, Baton Rouge, Texas, etc.:** Head I-10 East toward New Orleans Business District and Slidell. Exit Superdome/Poydras Street (Exit 234B). Proceed down ramp and continue straight for 8 blocks, staying in left hand lane.~ Turn left onto Camp Street and continue 4 blocks to Canal Street (a big 2-way Boulevard).~ Cross over Canal Street which turns into Chartres Street (in the French Quarter).~ Go 2 blocks on Chartres St and turn left on Bienville Street.~ Halfway down the street, you will see the garage entrance for Hotel Monteleone on the left. The Hotel Monteleone is **located in the New Orleans French Quarter.**

## General Proposal Guidelines

Both members and non-members may submit proposals for consideration. **Only original work** that has not been previously (a) published, or (b) presented at SERA, or (c) presented at another professional meeting is eligible for consideration. If a portion of the work has been previously presented, but not published, and the new original contribution is substantial, the work is eligible for consideration, but only if the prior work is explicitly acknowledged. For example, one year a student presented a paper explaining the precepts of computing "clinical significance," and the next year wrote a paper reporting a meta-analysis of clinical significance tests reported in a given literature. The primary focus of the second paper was the meta-analysis, the prior presentation was explicitly referenced, and the second paper was a co-winner of the SERA Outstanding Graduate Student Paper Award. Questions regarding the "originality of work" requirement may be addressed to the Program Chair. *The general principle is that SERA is not a venue for reporting work already reported either elsewhere, or previously.* Proposals for papers, tutorials, symposia, innovative format sessions, and graduate student seminars will be considered for inclusion in the program and should be submitted electronically to the SERA website at: <http://www.sera-edresearch.org>

Submit by **THURSDAY, SEPTEMBER 15, 2011.**

*Proposals are invited on topics from all disciplines related to education.*

**Authors are expected to register for the annual meeting and principal authors are expected to present their papers in person.** If circumstances prevent principal authors from doing so, they must designate a substitute to make their presentations. Each contributor may participate as principal author in no more than three (3) sessions. *All persons making presentations must register for the annual meeting.* **All meeting rooms at the annual conference will be equipped with an LCD projector and screen. Presenters must supply all other audio-visual equipment. Participants are advised to bring their own laptop computer.**

**PLEASE NOTE** that conference registration and payment \*\*\*RECEIPT\*\*\* are \*\*\*STRICTLY required\*\*\* within one month (i.e., **BY OCTOBER 15, 2011**) of the proposal submission deadline in order for proposals to be considered.

**First,** registration must be completed on-line at <http://www.sera-edresearch.org>

**Second,** payment may be made either using the web site and its Pay Pal features, which includes a credit card option, or by postal mailing a check or purchase order **BY THE PAYMENT RECEIPT DEADLINE OF OCTOBER 15th** to the address indicated on the conference registration form.

Any persons who have all of their proposals rejected may request a conference registration refund by contacting the Treasurer. The **proposals of any persons not completing both conference registration and payment BY OCTOBER 15th, 2011 will be rejected.**

Persons submitting proposals will be notified of the disposition of their proposals by the end of November. The DRAFT program will be posted on the SERA website in early December, and the final program will be posted in January.

**THE FIRST SESSION WILL START ON WEDNESDAY, FEBRUARY 1, 2012 AT NOON.**



## **Implicit Permission to Take and Use Photographs**

During the annual meeting photographs are taken of presenters and participants in public spaces (e.g., meeting rooms, hallways, at the luncheon), which may then be displayed during the annual meeting, in SERA newsletters, or on the SERA website. **THE SUBMISSION OF A PROPOSAL IS DEEMED A GRANT BY ALL AUTHORS TO SERA TO USE SUCH PHOTOS FOR NONPROFIT USES.**

## **PROPOSALS**

**ALL PROPOSALS** for inclusion in the program must be submitted electronically using the SERA website. <http://www.sera-edresearch.org>. Proposals should be no more than two (2) single-spaced pages in length.

### **1. Proposals for Paper Sessions**

Paper sessions are organized around topic areas selected by the Program Committee. Participants will each be given between 11-13 minutes to present papers in summary fashion. To propose a paper for a paper session, authors should prepare a summary including (a) a statement of the problem, (b) perspective(s) or theoretical framework, (c) methods and procedures, (d) results and conclusions, and (e) the educational or scientific importance of the study. Where feasible, sessions will be organized around themes to promote discussion and audience interaction. Session Chairs are typically one of the presenters from that session, so please be sure to check the program ahead of time to determine who is chairing a given session. An asterisk (\*) next to a presenter's name indicates selection as the session chair.

### **2. Tutorials/Training Sessions**

Tutorials or Training Sessions provide an opportunity to provide instruction and/or information on a specific topic to the audience in approximately 50 minutes. To propose a tutorial/training session, authors should prepare a summary to include (a) a statement of the topic, (b) perspective(s) or importance of the topic, (c) information about the topic, and (d) how it might be applied to a research project.

### **3. Proposals for Symposia**

A symposium provides an opportunity to address a specific problem or a complex topic from a variety of perspectives. It is the responsibility of symposia organizers to identify topics, solicit speakers, and, if appropriate, provide discussants for symposia sessions. Organizers must designate a chairperson in the proposal (typically the organizer). Being a presenter does not preclude a person from also serving as chair. The organizer is also responsible for notifying other symposium presenters of the disposition of the proposal. The summary should include the following information: (a) objectives of the symposium; (b) summaries of the point of view or conclusion(s) to be drawn from each presenter; (c) a statement regarding the scientific or educational importance of the symposium; and (d) a list, on a separate page, of the symposium presenters (including a discussant, if appropriate) and their institutional affiliations.

### **4. Proposals for Innovative Format Sessions**

Proposals for sessions employing innovative formats are welcomed. Proposals for structured debates on specific, controversial issues are particularly encouraged. Persons wishing to submit a proposal for an innovative format presentation should explain how the format will be structured and what topics or issues will be discussed. A list of presenters should be included on the cover sheet. The organizer is responsible for notifying all presenters of the disposition of the proposal.

### **5. Graduate Student Division ONLY for RESEARCH IN PROGRESS (Submit to Division VI only)**

To encourage participation by graduate students, seminars will be scheduled to allow graduate students to summarize research proposals, including theses or dissertations **still in the developmental stage that have not yet been defended**. A distinguished researcher will lead session discussions. Students who wish to submit a proposal for a graduate student seminar should prepare 3 copies of a 2-page, typed (size 12 font), single-spaced summary. The summary should include (a) a statement of the problem, (b) the significance of the study, and (c) a description of the proposed methods and procedures. Please be sure to indicate that the submission is research in progress.

Students whose seminar presentation proposals are accepted should send a copy of their seminar paper to the session discussant so that the copy is **RECEIVED on or before Friday, January 20, 2012**.

NOTE: Completed research by graduate students is *not* appropriate for these Division VI seminars. **Of course, graduate students may submit proposals for presentations not suitable for Division VI to any of the other five divisions, based on a match of presentation topic to the division's coverage.**

**Remember:**

- There is a **limit of 3 submissions** by a principal author.
- All authors and workshop, symposia, and innovative session presenters must register for the annual meeting.
- The Program Committee may exclude any proposal that does not meet the guidelines specified in this publication.
- Presenters are expected to bring **10-15 copies** of their papers to the annual meeting for distribution to the audience.
- All meeting rooms at the annual conference will be equipped with an LCD Projector but you must bring your own laptops. Presenters are encouraged to put their presentations on a flash drive and all the presenters load their presentation onto one laptop before the session begins. **Presenters must supply all other audio-visual equipment.**

**PLEASE NOTE** that conference registration and payment \*\*\*RECEIPT\*\*\* are required within one month (i.e., BY OCTOBER 15, 2011) of the proposal submission deadline.

**PAPERS**

The SERA annual meeting is intended as a venue in which presenters have written **an actual prepared paper, which is made available to interested members.** In other words, SERA is *NOT NOT NOT a venue for coming to a conference and extemporaneously delivering off-the-cuff remarks.*

Most papers have 10-18 pages of narrative, references, and many have tables and/or figures. All papers should have a cover page listing the title, au(s), and a note at the bottom saying, "**Paper presented at the annual meeting of the Southwest Educational Research Association, New Orleans, February (date), 2012.**" Also, *please, in the UPPER RIGHT CORNER of your cover page, type the Session Number in which the paper is being presented (e.g., "T2.3", "W1.4", "F3.1"),* as indicated by the conference program posted to the web in December prior to the annual meeting.

Many previous SERA papers from the past 34 years of conferences are available as ERIC "ED" documents. If you want to see some actual previous papers. You can go to <http://www.eric.ed.gov/ERICWebPortal/search/extended.jsp> and search on "Southwest Educational Research Association" as a KEYWORD, and then in the ED/EJ box click on ONLY ED (which are non-journal articles, and mostly conference papers). Most of these will have a link to the PDF version of the SERA paper.

If you know the ERIC "ED" "accession number" for the PDF file, you can also go to:

<http://www.eric.ed.gov/ERICWebPortal/basicSearch.do>

and type the accession number as the SEARCH TERM to get the PDF file. Here are 3 sample recent SERA papers: ED499991, ED499990, and ED500497.



**Submit proposals online at: <http://www.sera-edresearch.org/>**

**Proposals should be submitted to only one division.** The program committee reserves the right to reject all proposals that appear to be “duplicate” submissions by the same author(s). Please feel free to contact one of the following division chairs if you have questions.

**Program Division Chairs**

**I. Educational Administration, Policy, Leadership, & Program Evaluation**

*Sandra Harris*

*Lamar University*

*sandra.harris@lamar.edu*

*Aileen Curtin*

*Texas Wesleyan University*

*ecurtin@txwes.edu*

**II. Instruction, Learning & Cognition**

*Diane Goldsby*

*Texas A&M University*

*dgoldsby@neo.tamu.edu*

*Sandra Acosta*

*Texas A&M University*

*sacosta@tamu.edu*

**III. Methodology, Measurement & Evaluation**

*Tommy De Vaney*

*Southeastern Louisiana*

*tdevaney@selu.edu*

*Jason King*

*Baylor College of Medicine*

*jasonk@bcm.tmc.edu*

**IV. Teachers & Teacher Education**

*Sandra Richardson*

*Lamar University*

*slrichardso1@lamar.edu*

*Mark Reid*

*Texas A&M - Commerce*

*mark\_reid@tamu-commerce.edu*

**V. Special Populations & Counseling**

*Cynthia Martinez-Garcia*

*Sam Houston State University*

*cynthia3687@sbcglobal.net*

*Angela Gibson*

*American Public University*

*angelamgibson@hotmail.com*

**VI. Graduate Student Seminars for Work in Progress**

*LaVonne Williams*

*Texas A&M University-Kingsville*

*kflck00@tamuk.edu*

*Martha L. Tapia*

*Berry College*

*mtapia@berry.edu*

## **POSSIBLE DESCRIPTORS**

Following is a list of *suggested* terms you may use to describe your proposal:

Achievement	Early Childhood	Learning	Reading
Adult Education	Education	Learning Styles	Reflective Thinking
Arts	Educational Reform	Mathematics Education	Research Methods
At-Risk Students	Effective Schools	Minority Recruitment	Schools
Attitudes	Efficacy	Minority Retention	School Environment
Classroom Management	English Education	Multicultural Education	School Improvement
Clinical Issues	Evaluation	Novice/Expert Studies	School Restructuring
Cognition	Exceptional Education	Parent Education	Science Education
College Students	Field Experience	Parent Involvement	Self Perception
Computer Education	Finance	Performance Assessment	Social Sciences
Constructivism	Gender Issues	Policy	Statistics
Critical Thinking	Gifted Education	Post Secondary	Student Motivation
Culture	Higher Education	Education	Student
Curriculum	In-service Education	Preschool Education	Violence/Conflict
Development	Instruction	Preservice Education	Teacher Characteristics
Discipline	International Education	Principals	Technology
Drug Education	Language	Private Schools Professional	Tests
		Development	Vocational Education

Remember:

- There is a **limit of 3 submissions** by a principal author.
- All authors and workshop, symposia, and innovative session presenters must register for the annual meeting.
- The Program Committee may exclude any proposal that does not meet the guidelines specified in this publication.
- Presenters are expected to bring 10-15 copies of their papers to the annual meeting for distribution to the audience.
- All meeting rooms at the annual conference will be equipped with an LCD **projector and screen**. **Presenters must supply all other audio-visual equipment.**

**Submit all materials electronically (to be received by THURSDAY, SEPTEMBER 15, 2011)  
using the SERA website:**

<http://www.sera-edresearch.org>



## 2012 SERA OUTSTANDING PAPER AWARD

Authors are encouraged to submit five (5) single-sided copies of the paper submitted for presentation at the 2012 annual meeting to the SERA Executive Director, Bruce Thompson, by **NOON, THURSDAY, FEBRUARY 2, 2012**. The winner of the OUTSTANDING PAPER AWARD will be announced in the newsletter, present the paper at one of the sessions of Outstanding Papers from the State and Regional Research Associations at the annual meeting of the American Educational Research Association, and be recognized at the luncheon during the 2013 SERA annual meeting. Because of the 2012 conference date, the paper might actually be presented at the 2013 AERA conference. A stipend of \$750 to help defray the costs involved in attending the AERA meeting will be awarded to the winner.

### *Rules for Outstanding Paper Award Competition:*

- Five (5) single-sided hard copies of the presented paper (i.e, NO electronic copies) must be submitted to the Executive Director for consideration. MEMBERS INTERESTED IN ENTERING THE COMPETITION ARE **STRONGLY** ENCOURAGED TO SUBMIT THEIR 5 SINGLE-SIDED COPIES AT THE CONFERENCE REGISTRATION DESK DURING THE ANNUAL MEETING, OR MAIL THE PAPER COPIES PRIOR TO THE ANNUAL MEETING.
- The Executive Director must **receive** completed papers on or before the deadline. Late papers are **not** eligible for consideration. At the discretion of the Executive Board, an award may not be made if fewer than 3 meritorious papers are submitted for competition. Should this occur, all participants will be advised that the award will not be made.
- An individual may submit only one paper on which the member is a co-author. Papers with any common co-authors will not be considered.
- Persons who authored the SERA Outstanding Paper in the immediate prior year are not eligible for award consideration in the following year.
- **Active officers of the SERA Executive Council, including appointed officers, are not eligible for this competition.**

*Send completed papers for 2012 SERA Outstanding Paper Award  
by POSTAL/COURIER SERVICE ONLY to:*

**BRUCE THOMPSON, SERA EXECUTIVE DIRECTOR**  
**2012 SERA OUTSTANDING PAPER AWARD**  
**DEPT. OF EDUCATIONAL PSYCHOLOGY**  
**TEXAS A&M UNIVERSITY**  
**COLLEGE STATION, TEXAS 77843-4225**  
**VOICE: 979- 845-1335**  
**FAX: 979- 862-1256**  
**bruce-thompson@tamu.edu**  
<http://www.coe.tamu.edu/~bthompson/>

## 2012 SERA OUTSTANDING GRADUATE STUDENT PAPER AWARD

An award of \$500 and a certificate will be given for the best paper presented by a graduate student member at the annual meeting. For a paper to be eligible, **the work must be completed before the annual meeting** and presented in a paper or symposium session. Student authors should **electronically** submit completed copies of their papers to the SERA President to be **RECEIVED BY 5:00 P.M. WEDNESDAY, JANUARY 11, 2012**. The award winner will be announced at the SERA luncheon on Thursday, February 2, 2012. Please note that the Outstanding Graduate Student Paper Award competition is for **completed** graduate student research (i.e., **ONLY Division I through V papers**), and may include theses or dissertations, as well as other graduate student research. Students who present thesis or dissertation research should submit a **condensed version** of the work, not the full thesis or dissertation. **Work in-progress** presented in graduate student seminars (i.e., only Division VI) is **not** eligible for this award, nor are preliminary works, such as literature reviews or class projects and proposals.

### *Rules for Graduate Student Paper Award Competition:*

- The SERA President must **receive** completed papers on or before the **January 11, 2012**, deadline. Late papers are **not** eligible for consideration.
- If multiple authors write the paper, the first author must be a graduate student.
- At the discretion of the award committee, an award may not be made if fewer than 3 meritorious papers are submitted for competition. Should this occur, all participants will be advised that the award will not be made.
- Graduate students must indicate their student status on the title page of the paper.
- The Outstanding Graduate Student Paper Award competition is for **completed** graduate student research.

*Send completed papers for 2012 Outstanding Graduate Student Paper Award  
by E-MAIL ATTACHMENT ONLY to:*

**Bill Jasper**

**Sam Houston State University**

**Department of Mathematics and Statistics**

**Huntsville, TX 77341-2206**

**409-294-1575**

**mth\_waj@shsu.edu**



## 2012 SERA DEANS' AWARDS FOR EXCEPTIONAL GRADUATE STUDENT RESEARCH

Approximately sixteen \$100 awards and certificates will be given for graduate student research papers based on their contribution to educational research.

Two awards will be given to students from each of the following universities should they choose to participate: *Baylor University, Lamar University, Sam Houston State University, Texas A&M University, Texas Tech University, Texas Wesleyan University, Texas Women's University, The University of Texas, University of North Florida, University of North Texas, and University of Houston.* The respective Dean of the College of Education for each university sponsors these awards.

**Eligibility:** To be eligible, a student must be from one of the universities listed above and must attend the 2012 SERA annual meeting. Student authors should **electronically submit** completed papers to the SERA graduate student representative to be:

**RECEIVED BY 5:00 P.M. Wednesday, January 11, 2012.**

**Submission Criterion:** These awards are for completed graduate student research or research work in-progress (i.e., papers submitted to **any** division, I through VI). Papers can be in any form; literature reviews, explanations of statistical concepts, case studies and will be judged from the perspective of how it will further the theory of educational research.

The awards will be announced at the SERA luncheon on Thursday, February 2, 2012.

***Rules for the Deans' Awards Competition:***

- The SERA graduate student representative **must receive** completed papers on or before the January 11, 2012 deadline. Late papers are not eligible for consideration.
- The paper must be authored **only** by graduate students.
- If multiple authors write the papers, the choice can be made for the award to be given to the first author or split among all the authors.
- At the discretion of the awards committee, an award may not be made if fewer than 3 meritorious papers are submitted for competition from that university. Should this occur, all participants will be advised that the award will not be made. Also, awards will not be given for institutions at which Deans decide not to participate.
- If you do not receive a receipt confirmation via E-mail by 5:00 P.M. Monday, January 16, 2012, please contact the graduate student representative immediately by phone.

*Send completed papers for the 2012 Deans' Awards by E-MAIL ATTACHMENT ONLY to:*

**Sandra Nite  
SERA Grad Student Rep  
Texas A&M University  
snite@math.tamu.edu  
979-845-1170**